

# Shanghai Family

2025-2026

[www.shfamily.com](http://www.shfamily.com)

b Cc Dd Ee Ff Gg Hh Ii Jj Kk Ll Mm Nn Oo Pp Qq Rr Ss Tt

BACK TO SCHOOL



## SCHOOL DIRECTORY

# 2025 - 2026

International  
Schools

Bilingual &  
Local Schools  
(International  
Divisions)

Preschools &  
Kindergartens

Enrichment





協和教育  
XIEHE EDUCATION



海富幼儿园  
Fortune Kindergarten

27<sup>th</sup>  
Anniversary  
1998-2025

“海富系幼儿园”隶属于协和教育，始终遵循营造国际化教育氛围，创设和谐、宽松的教育环境和温馨的家庭气氛，融合国际、国内课程，融汇中西方优秀的教育教学方法、实践双语教学，倡导家园共育，满足社会对国际化、差异化的学前教育需求，促进幼儿情感、态度、认知能力、技能等各方面发展。

The first Fortune Kindergarten was founded in 1998. In accordance with the purpose of creating an international education environment with a relaxed and harmonious family feeling, Fortune Kindergartens took the lead in effectively integrating an international curriculum and domestic curriculum in China, striving to offer bilingual teaching with the concept of "East Meets West". In addition, the kindergartens advocate and promote the strategy of family-kindergarten cooperation. On the one hand, it satisfies the needs for international and differentiated preschool education, and on the other hand, it helps realize the well-rounded growth of children. The kindergartens, therefore, cultivate children to be future citizens who are healthy and sociable, full of curiosity, friendly to nature, courageous, confident, having a sense of responsibility with an international perspective, and open to embrace different cultures.

## Fortune Kindergartens

### 上海（浦东）Shanghai (Pudong)

Dongfang Campus: 021-5875 1212\*102  
Longyang Campus: 021-50398797  
Yaohua Campus: 021-5880 3988\*111  
Jintaiyang Campus: 021-5070 4300  
Tiandi Campus: 021-5875 9020  
Xinlicheng Campus: 021-5085 5988\*801  
Jinkui Campus: 021-6877 2096\*101

### 上海（浦西）Shanghai (Puxi)

Hongqiao Campus: 021-54580508\*8007/8008; 021- 64068072  
Sentosa Campus: 021-5417 9425\*606  
OCT Campus: 021-3359 2301  
Qingpu Campus: 021-5978 8650\*651  
Jing'an Campus: 15021882442

### 江苏省 Jiangsu Province

Wuxi Campus: 0510-8853 7608



Read more in  
"Fortune of Learning"



Register Now!





# XIEHE EDUCATION



“协和教育”创始于1993年的上海，秉持“融合中西，和谐发展”的核心价值观，是中国最早倡导并践行中西融合理念的专业教育机构，为学生提供PreK-12完整教育体系；现已举办近40所幼儿园、10余所中小学、1个课程中心，并受邀托管若干所公办幼儿园及学校，在校学生来自全球50多个国家和地区；旗下学校主要集中在上海地区，并在江苏无锡、福建厦门以及安徽合肥等地均有成功开拓办学的范例，已成长为中国最具影响力的优质双语教育机构之一。

Xiehe Education, founded in 1993 in Shanghai, has become a pioneer and leader in the exploration of Chinese non-governmental PreK-12 education. “Developing in Harmony, where East Meets West” is the core value of Xiehe Education, who was also the first to advocate and practice the concept of a Chinese-western integrated education in China. Thus far, Xiehe has already founded nearly 40 kindergartens, over 10 schools, and one academy, with students from over 50 countries and regions around the world. Xiehe has also been invited to host a number of public kindergartens and schools in China. In addition to Shanghai, Xiehe Education successfully operates schools and kindergartens in Wuxi (Jiangsu Province), Xiamen (Fujian Province) and Hefei (Anhui Province). At present, Xiehe Education has grown into one of the most influential bilingual education organizations in China, recognized for its highest-quality education.

## Providing a Pre-K to G12 Education Path

近40所幼儿园

Nearly 40  
Kindergartens

10余所中小学

10+ Primary and  
Secondary Schools

1个课程中心

1 Academy



教师总数 2000+

外籍教师数 600+

外籍教师占比 30%+

Teaching faculty: 2000+

Expat teachers: 600+ (30%+)

学校和幼儿园，学生总数 20000+ 来自50多个国家和地区  
Schools and Kindergartens: 20000+ students from 50+ countries and regions

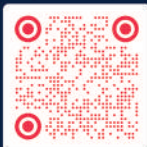


微信公众号 WeChat



视频号 WeChannel

小红书



小红书 Xiaohongshu

Open-Days



协和开放日 Open-Days

融合中西 和谐发展  
Xiehe EDU, where East meets West

[www.xieheedu.cn](http://www.xieheedu.cn)



# 2025 STUDENT VOICES

## Speech Competition 演讲比赛



# Green Walks Future Talks

## 绿行城市 共话未来

详情请扫码  
咨询官微





All the very best family content in Shanghai



**NOW ON-LINE!**



Home & Style



Education & Parenting



Food & Drink



Health, Wellness & Beauty

Travel & Guides



**NEW FEATURES INCLUDING:**

REVAMPED ARTICLES /  
BEAUTIFUL PHOTO GALLERIES /  
SCHOOL COMPARISON CALCULATOR /  
IMPROVED LISTINGS & EVENTS /  
WINS & DEALS AND MUCH MORE!







**General Manager** / Jenny Wu  
总策划 / 吴东坤

**Executive Editor** / Lynn Yen  
执行编辑 / 颜玲

**Censor** / Wan Lixin  
特约审订 / 万里新

**Designer** / Dongmei Zhu  
美术设计 / 朱冬梅

**Photographer** / Zheng Bin  
摄影师 / 郑斌

**Sales** / Lorraine Hou, Fangfang Hu  
销售代表 / 侯琨, 胡芳芳

---

**Advertising Hotline**

021 6875 0848/ 130 6176 1177  
shadvertise@shfamily.com

---

**新民晚报** 社区版 随报赠阅

上海报业集团主管主办  
国内统一连续出版物号: CN31-0062

**Shanghai Xinmin Community Media Co. Ltd.**  
Address: Rm 1801, 755 Weihai Road, Jing'an  
District, Shanghai

**上海新民社区传媒有限公司**  
地址: 上海威海路 755 号上海报业集团大厦 1801 室



8

**Editor's Note**

10

**Holding Hands, Setting Boundaries**

Parenting your teen through modern dating.

16

**Congrats to the Class of '25**

Celebrating the graduates.

18

**School Map**

International schools map.

22

**When Disordered Eating Becomes an Eating Disorder**

Am-Sino Healthcare Mental Health Team discuss spotting eating disorders.

23

**Understanding and Addressing School Bullying: A Guide for Parents**

Parkway shares what to do if your child is facing bullying.

24

**Food and Fun: Kid-Friendly Restaurants**

Dine where the whole family can enjoy a meal together.

26

**Food File: Roast Beef Carpaccio**

Make Osteria Twelve-16's signature dish with chef Marco.

28

**International School Curriculums**

Rundown of IB, AP, IGCSEs, A-Level, and more

30

**International Schools Listings**

Listings of international schools.

32

**College Anxiety? YCIS Has You Covered**

A safe pair of hands on the college admissions journey.

48

**Bilingual and Local Schools Listings**

Listings of bilingual and local schools.

50

**The Power of Coaching Conversations**

Empowering kids and parents one question at a time.

66

**Preschools and Kindergartens Listings**

Listings of early learning programmes.

68

**Battle for Mother Language**

Preserving identity in multilingualism.

81

**Enrichment Listings**

Specialized education.

86

**Glossary**

Common terms and definitions.

88

**School Index**

Alphabetical list of schools.

90

**School Visit Checklist**

The essential cut-out checklist for school tours.



# Empowering Minds

## Transforming Futures



Scan to enquire

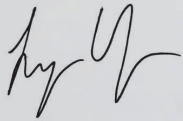


In this School Directory, we aim to provide families with the essential information about schooling options in Shanghai. The school listing pages of international schools (p30), bilingual and local schools (p48), and kindergartens (p67) give comprehensive overviews of what each school is like including curriculum, fees, and education philosophy.

Elsewhere we discuss how parents approach the exciting and sensitive topic of teen dating in our cover story (p10), along with the benefits of a coaching approach to parenting (p50), and the tug of war over multilingualism and preserving cultural identity (p68).

We recommend kid-friendly restaurants to dine at with the whole family (p24) and ask our medical partners for their expert advice on the signs of eating disorders (p22) and dealing with bullying at school (p23).

We hope you enjoy this issue of our annual School Directory and wish you the best of luck on your family's education journey.



Lynn Yen,  
Executive Editor

SF





**Follow Us For the  
Latest News and Events!**

*Follow us on*  
**WeChat**



Shanghai  
**Family**

**Parents & Kids**  
SHANGHAI

虎媽牛娃  
**HUMANTUWA**



**LIDOWAY**

夏都小镇

**YOUR PLACE, YOUR PACE**

慢慢来，生活很自在



上海市青浦区沪青平公路1583号

NO. 1583, Huqingping RD, Qingpu, Shanghai





# Holding Hands, Setting Boundaries

## Parenting Your Teen Through Modern Dating

*As children navigate teenage dating, parents walk a delicate line between guidance and respecting independence. By Khushboo Khanna*



**F**or many parents, the prospect of discussing puberty, sex, and relationships with their teenagers can feel like navigating a minefield. When is the right time to start? How much information is too much? And how can we ensure our children feel comfortable enough to come to us with their questions and concerns? For mothers Nishtha, Eve, and Edda fostering open communication has been a cornerstone of their parenting approach, albeit with their own unique nuances.



**Nishtha Mehta:**  
**Weaving Wellbeing  
into the Conversation**

Nishtha Mehta, an Innovative Leaders coach and facilitator based in Shanghai for two decades and mother to 14-year-old son Aryan, believes in “commit[ting] to the uncomfortable” in parenting, fostering growth through open dialogue. When it comes to sensitive topics like puberty and relationships, she finds that a direct, formal approach isn’t the most effective with her son. “One off sit-down serious talks is not what works for us,” she explains. “What seems to be working is taking the ‘wellbeing’ angle. Aryan, like any other teenager is discovering the joy of growth spurts and eager to eat better, exercise, look smart, perform better... So, when he brings up self-improvement and wellbeing topic, I also naturally bring up topics related to sex, changes in body/ emotions, consent, respect, in that context. Context helps.” She rates their current level of openness at a 6, observing that “Recently, I observed that when we are with close family friends... lot of these topics flow more naturally. More open conversation and point of view comes from him. So why not change the setting of just parent and child to more natural setting with other role models that seems to work for the child? I plan to continue on this approach.”



**Eve Wee-Ang:**  
**Naming it Directly  
and Dispelling the  
“Eww!” Factor**

Eve Wee-Ang, the editor, host, and writer of Parents & Kids and mother to a 17-year-old daughter and a 15-year-

old son, champions a frank and unambiguous approach to discussing sensitive subjects. “Since my kids were young, I’ve never believed in using euphemisms for genitalia and sex. I name them as it is: This is your vagina; this is your penis. Replacing them with cute words feels disrespectful and dishonouring our body parts.” This directness extends to answering their questions without hesitation. “I never turned my kids away or shushed them whenever they asked sex-related questions. They are curious, as they should be. The funny thing is, before you can get too descriptive, they go ‘ewww!!!!’ and run for their lives. It’s a great teaching opportunity because if they don’t hear it from us, guess where they will find out?” Eve reports a perfect 10 when it comes to openness in their conversations, a testament to her willingness to share her own experiences, including past mistakes. “I hope my kids know they can come to me about anything, and I will be honest with them about my life experiences, which include my past mistakes and the lessons I’ve learned. I tell them that despite what I’ve learned, I will still be making mistakes until I die, and guess what? So will you. I think being open about my humanity gives my kids permission to be human, too.”



**Edda Joyce Garcia:**  
**Creating a Non-  
Judgmental Space**

Edda Joyce Garcia, who runs the bespoke space styling agency ESTILO and is mother to an 8-year-old daughter, emphasizes the importance of creating a safe and non-judgmental environment for open dialogue. “In my approach to parenting, I really value honesty, openness, and building trust – especially when it comes to important topics like body changes and growing up. Parenting is all about fostering trust and open communication – making sure my daughter feels supported, informed, and never ashamed of the natural transitions she’ll go through.” She rates their current level of candor at an 8, attributing it to “creating a space without judgment, being a good listener, and reassuring her that no topic is ever off-limits.” Edda believes this foundation of trust is crucial as her daughter approaches her teenage years.



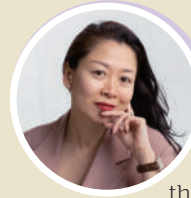
## Navigating the Digital Landscape

The omnipresence of social media and free rein in internet adds another layer of complexity to teenage sexuality, relationships, and dating. Parents grapple with how to guide their children in this virtual world, where curated images and fleeting trends can heavily influence perceptions of relationships and self-worth.



### Nishtha: Real-Life Examples as a Compass

For Nishtha, guiding her son through the digital realm involves grounding his online experiences in real-world understanding. "My approach has always been real life examples and experience based. No lectures or theory. We discuss news and examples about consequences linked to right and wrong content on social media. Or right and wrong choices. Like case study breakdown. Putting him in the driver's seat for bringing more awareness, and how his choices that will affect both him and his parents, helps him to feel responsible." While acknowledging the inevitability of experimentation, she believes this approach can minimize potential pitfalls. "Also, I set an example for him with my phone being accessible. That sets the tone for him to show me his social media feed, even though he resists time to time. It gives me visibility and ability to guide." She also employs practical measures like password-protected apps and joint agreements on app usage and time limits, reinforcing the concept of shared responsibility.



### Eve: Embracing Curiosity and Open Affection

Eve approaches the impact of social media with curiosity rather than outright restriction. "As my children grow, I approach everything they do with curiosity and an open mind. I was once anti-social media, but now I get myself into it just to understand the appeal. Now, we send each other memes on Instagram." Instead of solely focusing on the potential negatives of online relationships, Eve emphasizes the importance of modeling healthy relationships within the family. "My husband and I are openly affectionate about our love for each other in front of our kids. This means that when we are upset or have disagreements, we are just as open about it. This gives the kids a semblance of normalcy when it comes to real-life relationships vs. the manufactured reels they see online." This grounding in authentic connection serves as a vital counterpoint to the often-filtered world of social media.



### Edda: Balancing Supervision and Trust

Edda takes a balanced approach to her daughter's online interactions, setting boundaries while also fostering trust. "I am very particular with her screen time, actually. I set boundaries as to when and how long she can be online. Sometimes I watch with her to learn and understand what she is interested in at the present. If I see something inappropriate or nonsensical, I let her know and tell her the reasons she cannot keep watching such. Of course, it is inevitable what she might encounter. I supervise but I do not overpower or control too much. I think it is best not to cage them up from the world's reality. And going back to proper guidance and open communication, I believe with these you can set the right path." She actively uses parental controls and monitors browsing history, but always accompanies these measures with open conversations about online safety and responsible consumption. "Sometimes, I also take the initiative to introduce videos or websites that align with her current interests... so that her feed becomes filled with content that inspires her and nurtures her passions."





# Setting Boundaries and Respecting Privacy

Navigating the delicate balance between offering support and respecting a teenager's growing need for privacy is a constant challenge for parents. How do we stay informed without being intrusive? How do we create a safe space for sharing without appearing to pry?



## Nishtha: **Trust with Visibility**

Nishtha admits that finding this balance is "very difficult," but she is optimistic about their progress. "I believe in giving 100% trust first with clear boundaries. And the knowledge to him that if trust is broken then there are consequences. The goal for me is to have visibility rather than expecting every piece of information. Privacy is not blanket 100%. He can keep details to himself, as long as I am aware of who he is with, where he is, what are the activities involved." This approach emphasizes trust as the foundation, with clear expectations and a degree of parental awareness for safety and guidance.



## Eve: **The Lighthouse Parent**

Eve describes her approach using a powerful metaphor: "I now see myself as a lighthouse in my parenting approach - I am always here shining a light for you whenever you need me." This encapsulates her philosophy of being a constant source of support without being overbearing. "My kids know that whenever they talk to me, I put everything aside and listen. I then ask them if they need my opinion or me to step in. Usually, all they need is a safe space to air their thoughts and vent their emotions. When needed, I tell them, 'This is my opinion, but I am not you, and you know yourself best, so listen to yourself.'" This approach respects their autonomy while ensuring they have a reliable sounding board.



## Edda: **Allowing Space for Decompression**

Edda also recognizes the importance of respecting her daughter's need for personal space, especially when dealing with difficult emotions. "Whilst she knows it is okay for her to talk to me about anything I also allow her to have her own space. If she is angry or sad about something, she has freedom to have a bit of privacy and decompress." This understanding that teenagers need time and space to process their feelings contributes to a more trusting and open relationship in the long run.





# Perspectives on the “Right” Age and Early Relationships

The question of when teenagers should begin dating is a common concern for parents. Is there an ideal age? How do our own experiences shape our views on this for our children?



## Nishtha: **Fostering Friendships First**

Nishtha prioritizes the development of healthy friendships over the pressure to date during the teenage years. “I’d rather encourage my son to have great girl friend friendships along with boy friend friendships and not get so bogged down with any peer pressure of dating. Not every relationship with a girl/ other gender needs to always be romantic in this teenage phase of life. At this age it’s a great opportunity for them to understand and practice what it’s like to have great friendships with both genders. It’s a beautiful developmental skill overlooked with obsession of dating. And of course in that process, if he discovers that he has stronger liking for a specific girl, I’ll be more than happy to support and guide.”



## Eve: **Beyond the Numbers Game**

Eve rejects the notion of a specific “appropriate” age for dating, emphasizing the individuality of teenagers. “I’ve never thought about appropriate or inappropriate age for dating as these are numbers, and teenagers aren’t numbers. They are humans with thoughts, feelings, and raging hormones, and some are in challenging circumstances that rob them of love and acceptance.” Reflecting on her own early experience of dating at 16, she focuses on the importance of self-awareness within any relationship. “With my children, they are raised to think and take responsibility for themselves. It’s wonderful to be in love but always return to yourself. Never abandon yourself.”



## Edda: **Guiding with Experience, Not Control**

Edda hopes her daughter will feel comfortable exploring friendships with both boys and girls and envisions dating occurring sometime in her teenage years, perhaps around 16. However, she acknowledges the limitations of parental control in this area. “Of course, I know I can’t control when she meets someone special or at what point in her life it might happen. My role is to guide her, educate her, and nurture a strong sense of self-respect and responsibility. With that foundation, I’m confident she will grow into a woman she herself will be proud of.”





# Guiding Through the Dating Phase

As their children venture into the world of dating, parents play a crucial role in providing guidance and support, helping them navigate the complexities of romantic relationships.



## Nishtha: **Creating a Supportive Social Ecosystem**

Nishtha's approach involves creating a broader social environment where her son can observe and interact with healthy relationships. "My approach and hope is to create scenarios where he can meet and spend time with more role models. We hang out in various social circles with family friends, families, even my work colleagues. When they see healthy and diverse relationships, they start to discover perspectives." She also aims to be approachable and involved in her son's social life. "I want to be that cool mum who is easy to talk to and fun to hang out with. I would also make an effort to get to know his friends, perhaps invite them over regularly, get together with their parents too, do fun things together."



## Eve: **Core Principles for Healthy Relationships**

Eve focuses on imparting fundamental principles for navigating relationships. Her key pieces of guidance are succinct and powerful: "1. Respect your partner's 'No'. 2. Never abandon yourself." These principles emphasize consent, self-respect, and maintaining one's identity within a relationship.



## Edda: **An Unforced and Interested Approach**

Edda plans to take a natural and unforced approach, drawing on her own experiences to guide her daughter. "I will share my personal experiences and let her know she is free to ask me as many questions. I will take unique interest in her personal life but not pry too much. I will also talk to her about the many different scenarios dating can lead to." Her goal is to be a supportive and approachable figure.



# Parting Wisdom

As these teenagers navigate the exciting and sometimes turbulent waters of early relationships, the wisdom shared by their mothers offers valuable guidance for fellow parents. Nishtha advises, "Share your own life stories, involve them in your own social circles so they are willing to share too or ask questions or observe. Let's create more points of references for them." Eve cautions against dismissing teenage relationships, stating, "Parents should not downplay or dismiss teenage relationships as 'puppy love' or 'teenage crushes'. To me, every relationship contributes to one's life experiences, and dismissing it devalues one's feelings as unimportant and invalid." Edda emphasizes the counterproductive nature of excessive control: "I would say the more we restrict the more kids rebel and keep secrets. Communication, setting expectations, setting boundaries are very important. Let them know they will make mistakes for sure, go through different waves of emotions, and that's all okay."

Ultimately, the most profound advice is often the simplest. When asked what single piece of advice they would offer their children as they begin to date, Nishtha says, "Tell me more about your new friend. I would love to meet her whenever you want." Eve reiterates her core principle: "Never abandon yourself." And Edda echoes this sentiment, urging her daughter "to enjoy the journey – to know that dating isn't always a bed of roses. There will be highs and lows, moments of happiness and lessons in disappointment. But through it all, I would want her to stay true to herself, to know her worth, and to never lose sight of what she deserves." **SF**



*feature*

# Star Students of 2025

Congratulations to the Class of 2025! This crop of remarkable graduates has shown dedication and hard work to arrive at this exciting moment in their educational careers. Hear from a few graduates about their reflections on time in Shanghai, how their schools shaped them, and about their plans for the future. We toast to each member of the Class of 2025 and their accomplishments so far. We wish them the best of luck in their futures!





# Concordia International School Shanghai

## Please share with us why you chose your university and major.

Aviation has always been my passion since a young age. I would build and fly rc airplanes and sit in every aircraft cockpit I could at airshows. In middle and high school, I knew I wanted to design the next big thing in aerospace, be it rockets or new supersonic aircraft. As such, I knew I wanted to pursue aerospace engineering since 5th grade. I chose ERAU for its strong aerospace reputation, hands-on programs, and unmatched hands-on opportunities in next generation aerospace technology.

## How has your time in Shanghai/ at your school changed you?

My time at Concordia has taught me that the sky is the limit. Under Dr. Peter Tong's mentorship, I've turned my dreams into reality by exploring aerospace, from intelligent drones to full-scale aviation. This journey also led me to establish Phoenix Squadron, an aerospace program that has deepened my passion and allowed me to give back to the school community. As I look ahead to college, I'm confident that

great things—dreams, even—are within reach.

## What are you most looking forward to in college?

I'm excited to explore the latest advancements in aerospace, particularly in efficient electric propulsion, hypersonic flight, and ion propulsion. I've been researching these areas and can't wait to contribute to their development as I believe advances in these technologies will bring the next major revolution in the aerospace industry. Additionally, I'm eager to discover Florida and experience more of the U.S. beyond my home state of California.

## What is your proudest achievement?

My proudest achievement has been realizing my STEM dream. As a child, I tinkered with old computers and electronics, eventually graduating to building Arduino robots. At Concordia, I am able to push my limits, from building my first drone to creating a 50-drone swarm and winning the VEX Robotics national championship with an incredible team. This journey has shaped my identity as an engineer.



**Marcus Chu**

**Nationality**

*United States*

**College/University**

*Embry-Riddle  
Aeronautical  
University-Daytona  
Beach*

**Intended Major**

*Aerospace Engineering*



**Alannah Sung**

**Nationality:** *Chinese  
(Hong Kong)*

**College/University:**  
*NYU Stern*

**Major:** *Business with  
a concentration in  
Marketing*

## Please share with us why you chose your university and major.

My introduction to Marketing started only in junior year, in the Applied Learning Business & Finance course. We participated in a campaign competition for advertising agency BBDO, and through this project I felt I found a field that I could thrive in – blending both my creative passions and analytical eye. I chose to pursue Marketing at NYU for not only their renowned Stern School of Business, but also for the dynamic and exciting arts scene in NYC, where I can explore my interests in dance and fashion.

## How has your time in Shanghai/ at your school changed you?

Being at Concordia opened my world to many opportunities I would not have experienced otherwise. From being in classes like Business to joining the Dance team and planning the MUN conference, each aspect of my experience at Concordia has built my character and allowed me to explore my interests and talents.

## What are you most looking forward to in college?

I'm most excited for the community that I'll be a part of. NYU is a place filled with amazing creatives, performers, entrepreneurs, and I can't wait to be a part of this group of brilliant minds. I look forward to how I will grow and what new experiences I will face as I go through college.

## What is your proudest achievement?

An achievement I hold closest to my heart is becoming captain of my school's APAC dance team. Dance has been an integral part of my life since a very early age, and it's where I found an outlet for expression and explored my creativity and artistry. I had been a part of the dance team since my freshman year, and our annual APAC dance piece had always been something that I poured a lot of my time and passion into. Taking on a leadership role in the team in my senior year was something I am proud of, and I'm so happy to have been able to help create our performance and support the team.



## Shanghai French School



**Alix De Boni**

**Nationality**

French

**College/University**

Imperial College  
London in London, UK

**Intended Major**

Biological Sciences

### Please share with us why you chose your university and major.

From an early age, I have been fascinated by how life functions, from molecular and cellular processes to the complexities of the human body. I am applying to this university not only for its global reputation but also for its strong English curriculum, real-world applications, and access to scientific institutions.

### How has your time in Shanghai/ at your school changed you?

Those seven years at the Shanghai French School gave me a unique global perspective, allowing me to engage with different cultures, adapt to diverse viewpoints, and motivated me in taking a beneficial Chinese course. Academically, I developed rigor and efficiency, continuously challenged and inspired by my peers.

### What are you most looking forward to in college?

In college, I am excited to continue my journey in the field of biological sciences, expanding and deepening my knowledge. I am excited about the opportunity to meet new people and engage with a diverse community. I look forward to finding fulfillment in my courses, while discovering a new country, a place I have never travelled to before.

### What is your proudest achievement?

My proudest achievement is having the opportunity to participate in the Asia Pacific Football Championship as the captain of my team because a few have the privilege to participate in such a tournament and travel with their school and teammates. It has been a rewarding experience, and it has thought me to adopt a competitive mindset while fully experiencing the present moment, which is something we often forget during this final year of high school.

## Wellington College International Shanghai

### Please share with us why you chose your university and major.

Computer Science has been my favourite subject since year 9 and participated in relevant extra-curricular activities such as Hackathon and VEX. As I enjoyed these activities, I got more interested in the subject and eventually wanted to major this subject. Accordingly, I naturally wanted to apply to universities with a good Computer Science department.

### How has your time in Shanghai/ at your school changed you?

I believe that the time at Wellington has allowed me to make lots of personal growth, especially with my leadership skills. Though I never thought I would be a future leader, I had many leadership opportunities such as the Secondary Liaison in the Heads of Pupil Leadership Team, from which I not only developed my leadership

skills but also crucial social skills like effective communication and teamwork.

### What are you most looking forward to in college?

I am looking forward to meeting new people and getting to learn further about the subject of my interest, Computer Science. I am really excited for the new journey ahead of me, but am quite sad that I will be leaving Wellington for college soon.

### What is your proudest achievement?

My proudest achievement is initiating and organizing HackWell, one of the biggest pupil-led school events, inviting over 110 younger pupils from various schools across China. I am particularly proud since I recruited and mentored younger pupils to take over and allow HackWell to continue thriving as a legacy even after my graduation.



**Halyn K.**

**Nationality:** South Korea & US

**College/University:** offers from UATX, USC  
**Major:** Computer Science





**Josephine Dellith**

**Nationality**

*German*

**College/University**

*Eberhard Karls University of  
Tübingen in Germany*

**Intended Major**

*Human Medicine*



## German School Shanghai

### **Please share with us why you chose your university and major.**

I have always been interested in the natural sciences, and I found genetics and neurobiology particularly fascinating during high school. This led me to focus increasingly on medicine when choosing my studies. After graduating from high school, I completed a voluntary social year in the surgical ward at the Thorax Clinic in Heidelberg. This experience made it clear to me that medicine is the right path for me.

### **How has your time in Shanghai/ at your school changed you?**

I particularly remember the "Science Fair" in the German School Shanghai, where we had the freedom and responsibility to plan, conduct, and evaluate our own scientific project. This was a valuable glimpse into research and further strengthened my interest in it.

Additionally, the diverse extracurricular activities and the opportunity to moderate events such as the Christmas market, the graduation ceremony, or interviews

have had a lasting impact on me. They broadened my interests and helped me develop confidence in public speaking. This has been beneficial for me on several occasions: last semester, I had the honor of delivering part of the thank-you speech on behalf of the dissection course to the body donors, and I am involved in the "Working Group on Organ Donation Awareness," where we inform school classes about organ donation.

### **What are you most looking forward to in college?**

First, I aim to successfully complete my first state examination in the summer. I am already looking forward to the clinical phase of my medical studies and plan to do a semester abroad. Currently, I am considering Brown University in the USA, but I am open to other options as well. I also plan to remain flexible regarding my professional future after medical school: at the moment, I find forensic medicine or pathology very exciting, but I am also open to being convinced by other specialties.



## Shanghai American School



**Caridee Chau**

**Nationality**  
Chinese

**College/University**  
Oxford University  
**Intended Major**  
Law

### **Please share with us why you chose your university and major.**

I chose to study law because of the way it combines reasoning, morality, and lots of other concepts I'm intrigued by. In terms of my university, I really appreciated the tutor system at Oxford, and the college I chose happened to have an ongoing tradition of racing turtles!

### **How has your time in Shanghai/ at your school changed you?**

I've lived in Shanghai my entire life, so seeing the city change around me has helped me realize a lot about myself. As I approach graduation, I've found myself already missing my friends and family, so, if anything, growing up taught me to cherish my loved ones.

### **What are you most looking forward to in college?**

Karaoke nights! Other than that, I'm just excited to explore a new community and meet new people. There's so much of the world that I haven't seen yet, and college is a place where people find lots of eye-opening opportunities and experiences.

### **What is your proudest achievement?**

I'm the proudest of the things I've left behind for other people because I'm confident that these things will persist long after we physically part ways at the end of the school year. At school, it's the small traditions and clubs that I've helped create and outside the classroom, it's everything my friends and I have learned from each other.

### **Please share with us why you chose your university and major.**

I have always gravitated toward the sciences, whether through hands-on workshops as a kid or taking HL sciences in the IB Diploma. I hope to use this opportunity to contribute to oncology research and prepare for veterinary school. Later, I intend to add a business-related study to complement my pursuits.

### **How has your time in Shanghai/ at your school changed you?**

Growing up in Canada, Shanghai and the SAS community has been vastly different from what I was used to. Living here has truly shown me the value of being around ambitious yet—for the lack of a better word—fun people. I have grown to love a city like Shanghai as it has truly spoiled me with opportunity, energy, and culture.

### **What are you most looking forward to in college?**

I am excited to get closer to what I want to do by focusing more intentionally on the things I care about. At the same time, I also look forward to living independently, shaping my routine and environment, and really just enjoying the college experience while taking on some new challenges.

### **What is your proudest achievement?**

Through challenges—and milestones—most people do not know about, I have found myself coming out with more maturity and the ability to maintain the values of who I am. So despite the many things I still need to work on, I am proud of the small circle of lasting relationships I have built, ones full of honesty, love, and sometimes a little push.



**Grace Li**

**Nationality**  
Canadian  
**College/University**  
University of Toronto  
**Intended Major**  
Biological Sciences





## Shanghai United International School Pudong Campus



**Eva Ye**

**Nationality:** Chinese

**College/University:**

University of Oxford

**Major:** History

### Please share with us why you chose your university and major.

I chose many of my schools because I believe in chasing dreams and a “no regret” mindset. Trying meant risking failure. Not trying meant accepting it. In the same way, studying history had also been a childhood dream and a constant in my life. I study history to understand humanity. Because at its core, history is the story of people. Who we are. Where we came from. No matter the subject or setting, human nature endures as an eternal force, and through history, I gain a way of seeing this world.

### How has your time in Shanghai/ at your school changed you?

Growing up in this cosmopolitan metropolis, I found myself chatting with French musical actors and dancing with the Shanghai Ballet. I’ve always been part of where East meets West—a spirit my school also embodied. Together, they shaped my global perspective and deepened my appreciation for moving between and

speaking to these different worlds.

### What are you most looking forward to in college?

Breaking through the limits of being a high school student, I look forward to exploring and learning freely. I want to discover new ideas, meet people from different backgrounds, and challenge my assumptions. Whether academically, culturally, or socially, I’m excited to grow beyond what I know and embrace the diversity of the world where my curiosity will lead me.

### What is your proudest achievement?

Being voted “Best Smile” for our graduation activity might seem like a simple, lighthearted moment, but to me, it felt like true recognition of who I am. More than just a personality trait, my smile has, over the years, become a quiet belief. It reminds me of even the difficult times, when I didn’t feel like smiling, and how it became my strength: a way of choosing hope, of standing back up every time I fall. I’m proud of my smile and the personal philosophy it holds.

## The British International School Shanghai Puxi

### Please share with us why you chose your university and major.

My exposure to a blend of globally influenced designs and traditional Ancient Chinese styles in Shanghai has fueled my desire to create similarly beautiful designs through architecture. BCIT stood out for its hands on approach, with a wide variety of relevant courses and myriad opportunities for practical design.

### How has your time in Shanghai/ at your school changed you?

Having lived in Shanghai for nearly sixteen years, I now call it home. The two international schools I have attended here, NAIS Pudong and BISS Puxi, especially the diversity of my peers and the multiculturalism celebrated in school events, have shaped me into the

internationally minded student I am today.

### What are you most looking forward to in college?

I’m excited to interact with and get to know a new community of people and places in a radically different city. I will cherish opportunities to make new friends and memories as I grow as an independent adult, as well as opportunities to learn practical and life skills.

### What is your proudest achievement?

Completing my final art exhibition, which displayed all my artworks of my two years in the IB Visual Arts course. The work and hours my classmate and I put into curating the artworks, and arranging the space in a way that shows what inspired them exceeded anything I had done earlier.



**Salma Gichana**

**Nationality:** Kenyan

**College/University:**

BCIT, British Columbia

Institute of Technology

**Major:** Bachelor of

Architectural Sciences

# When Disordered Eating Becomes an Eating Disorder

*Am-Sino Healthcare Mental Health Team discuss spotting eating disorders.*



eating disorders, ARFID is not driven by concerns about weight. It involves avoiding foods based on the sensory experience of the food or eating environment. More than just "picky eating", ARFID leads to malnutrition and weight loss, often resulting in a dependence on tube feeding or nutritional supplements.

## Red Flags for Disordered Eating:

- **Food-Related Behaviors:** Refusal to eat socially, strict food rules, or logging calories.
- **Mood Changes:** Anxiety, defensiveness, and negative body talk.
- **Physical Signs:** Weight fluctuation, dizziness, fatigue, hair thinning, frequent stomach complaints, and absent menstruation. Extreme calorie restriction can lead to fainting, chills and low blood pressure.
- **Social Withdrawal:** Avoiding social events, especially those involving food

## Hope

Although overwhelming, it's important to remember that eating disorders are treatable: it's never too early (or too late!) to get help. Effective treatment involves a multidisciplinary team of physicians (GPs and Psychiatrists), mental health professionals and nutritionists, collaborating for recovery.

If you or someone you know shows signs of disordered eating, reach out to us for professional support.



Eating behaviours exist along a continuum, from healthy to disordered eating. Healthy eating is not always eating 'healthy foods', but rather making flexible choices that satisfy nutrition without causing anxiety or guilt. Disordered eating may include intense dieting, restrictive intake, or binge eating. When disordered patterns prolong and intensify, they may be considered eating disorders.

## What Characterises Eating Disorders?

Eating disorders are complex mental health conditions that significantly impact a person's physical, emotional, and social well-being. Many different eating disorders exist, each with unique motivation and behaviours. The four most common eating disorders are:

**Anorexia Nervosa (AN):** persistent food restriction leading to significantly low body weight, accom-

panied by a distorted body image. Someone with AN may obsess over calories, fast, purge or over-exercise. Despite extreme weight loss and its impact on health, intense fear of gaining weight persists.

**Bulimia Nervosa (BN):** Recurrent binge-eating episodes followed by compensatory behaviours (self-induced vomiting, fasting, excessive exercise, laxatives). It's common for people with BN to struggle with guilt and shame, experiencing mood swings, dizziness and fatigue.

**Binge Eating Disorder (BED):** Recurrent episodes of over-eating a large amount of food while feeling a loss of control. Unlike BN, these episodes aren't followed by purging or other compensatory behaviors. Intense shame or distress often accompany these episodes.

**Avoidant/Restrictive Food Intake Disorder (ARFID):** Unlike many



**Yu Li Cunningham,**  
**Clinical Psychologist,**  
**Psychotherapist**  
American-Sino  
Women's and  
Children's Hospital  
**Tel: 400 163 4482**



# Understanding and Addressing School Bullying: A Guide for Parents

*Parkway shares what to do if your child is facing bullying.*

School bullying and social exclusion among teenagers are complex issues with lasting psychological impacts. Recognizing the causes, identifying warning signs, and implementing effective strategies are critical steps for parents to protect their children and foster resilience. And healthy and supportive family interaction patterns can foster teenagers' self-identity and competence which prevents your children from bullying.

## Root Causes of Bullying

Bullying often stems from a mix of individual and social factors. Teens perceived as different due to appearance, socioeconomic status, or personality traits (e.g., shyness or anxiety) are frequent targets. Group dynamics, such as peer pressure to conform or bystander apathy, further enable bullying. External triggers like poor school supervision, cyberbullying via anonymous platforms, and family interaction patterns (overprotection, overcontrol, neglect, criticism, and family violence) also play roles.

## Recognizing the Signs

**Physical:** Unexplained injuries, frequent headaches/stomachaches, or weight fluctuations.

**Emotional:** Increased irritability, self-deprecating remarks ("I'm worthless"), or loss of interest in hobbies.

**Behavioral:** school refusal, sudden decreasing academic performance, or self-harm.

**Social:** Avoidance of social events

deleted social media accounts, or secretive device use. Prolonged symptoms (over 2 weeks) signal urgent intervention.

## Effective Parental Responses

- 1. Open Communication:** Create a safe space for dialogue. Use empathetic phrases like, "I've noticed you seem upset. Want to talk?" Avoid blaming language. Validate their feelings: "It's not your fault. Bullying is wrong."
- 2. Collaborate with Schools:** Document incidents (dates, witnesses, evidence) and formally request anti-bullying protocols, such as seat changes or counseling. Advocate for school-wide programs like anonymous reporting systems.
- 3. Rebuild Confidence:** Engage therapists trained in trauma-focused approaches (e.g., expressive arts therapy) to restore self-worth. Role-play assertive responses (e.g., "Stop. I'm leaving.") and encourage extracurricular activities to diversify social networks.
- 4. Long-Term Safeguards:** Teach digital safety (privacy settings, evidence preservation) and legal rights under youth protection laws. Discuss healthy relationships to recognize manipulation.

## Avoid Pitfalls

Never dismiss the issue ("Just ignore them") or retaliate aggressively, which may escalate risks. Prioritize mental health over mere conflict resolution.

By acting promptly, fostering

resilience, and building systemic support, parents can empower teens to navigate adversity and reclaim their sense of safety and self-worth.

## Long-Term Resilience Building

- **Narrate strength:** Highlight times the child overcame challenges ("Remember how you handled that disagreement?") to reinforce self-efficacy.
- **Normalize imperfection:** Share age-appropriate stories of your own social struggles to reduce shame.



**Selina Lin**  
Licensed Clinical  
Psychologist



*in season*

# Food and Fun: Kid-Friendly Restaurants

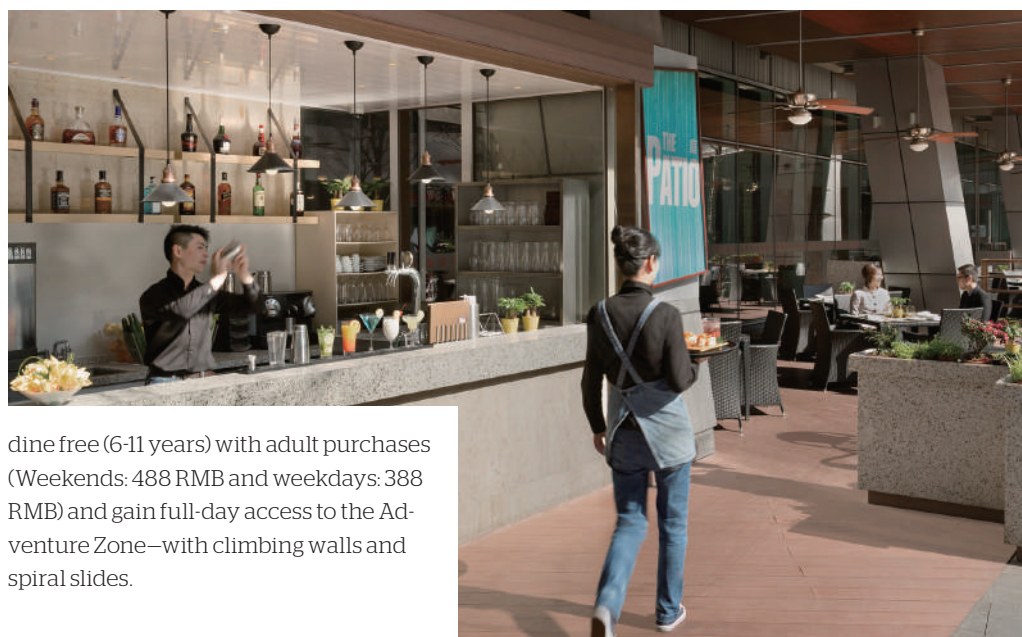
**Dine where the whole family can enjoy a meal together.**

**G**ather the whole family to enjoy a nice meal out together. These kid-friendly restaurants make sure everyone is made to feel welcome and accommodated for. No need to call a babysitter or to feel stuck at home. Enjoy family time out on the town with a delicious meal that will meet the approval of even the pickiest of tastebuds.

## **Kerry Hotel Pudong, Shanghai**

Kerry Hotel Pudong, Shanghai, launches the “Dine & Play” family experience, blending gourmet delights with interactive fun. Enjoy signature stations at The COOK and The MEAT, while the hotel’s iconic “Adventure Zone” offers boundless excitement for young explorers.

At The COOK, savour Chef Otto’s grilled steaks, seafood platters, and artisanal desserts. The MEAT presents a semi-buffet brunch starring slow-roasted beef ribs and truffle-infused lobster. Children



dine free (6-11 years) with adult purchases (Weekends: 488 RMB and weekdays: 388 RMB) and gain full-day access to the Adventure Zone—with climbing walls and spiral slides.

On weekends, upgrade with 138 RMB for a kids’ menu featuring mini burgers and cartoon-shaped dim sum. Offer valid through December 31, 2025.

**Address:** 1378 Huamu Road, Pudong New Area  
**Tel:** 6169 8886

## **Le Méridien Shanghai, Minhang**

Latest Recipe Restaurant of Le Méridien Shanghai, Minhang presents a Crayfish-Themed Buffet Dinner. Savor unlimited servings of crayfish in six signature flavors, alongside a variety of fresh seafood and early summer-inspired grilled specialties. Treat yourself to live cooking stations, Le Méridien’s signature ice cream (a hit with kids!), Hawaiian pizza, made-to-order crêpes, and free-flowing juices and soft drinks. Watch skilled chefs craft creative dishes in the open kitchen. While little ones can unwind in the dedicated Kids Club play area. Children’s Buffet Dinner is 100 RMB per child (height: 1m-1.4m).

**Address:** Latest Recipe, 1F, 3199 Caobao Road, Minhang District  
**Tel:** 5329 9999 ext. 6999





## Pudong Shangri-La, Shanghai

Pudong Shangri-La, Shanghai is committed to creating warm and delightful dining experiences for families, with a diverse selection of children's menus and exclusive dining benefits.

At YICAFE buffet restaurant, children aged 12 and under dine at half price, while those 6 and under enjoy complimentary buffet meals (limited to two per room). The buffet also features à la carte kids' dishes, including ham and cheese sandwiches, tomato

pasta, wonton noodles, kid-friendly fried rice, chicken wings, and more to satisfy young appetites.

In-room dining offers a dedicated children's menu with wholesome options such as sweet corn congee, steamed egg custard, fried rice, pasta, and chicken wings, ensuring convenient and comfortable family dining.

**Address:** 33 Fucheng Road, Pudong New Area

**Tel:** 6882 8888



## Chili's

Chili's® is thrilled to elevate the dining experience for its youngest guests with a newly upgraded Kids' Menu! Designed to deliver both nutrition and fun, this carefully crafted selection aims to satisfy even the pickiest palates while sparking joy at every bite.

Kids' Meal Highlights include Classic

Pasta tossed in rich tomato sauce, offering a comforting favorite. Hand-Breaded Crispy Chicken Tenders with golden, crunchy perfection—ideal for dipping. Beef Mini Burgers made with premium beef patties, served on soft buns for a wholesome bite. Kid-Friendly Chicken Quesadillas, packed with savory fillings for a tasty sharing experience. Every Kids'

Meal comes with a free beverage (choice of juice or hot milk) to fuel the excitement.

**Address:** No. B244, B2 Floor, Shanghai Jiuguang Center, Jing'an District

**Tel:** 157 9509 2409

**Address:** Room 172, 1st Floor, Building 6, Zhangjiang Grand Place, Pudong New Area

**Tel:** 178 2176 5788





*Marco Erba, Executive Chef, comes from Milan, Italy. He attended ALMA, The International School of Italian Cuisine, then spent the next fifteen years in Michelin-starred restaurants and 5-star luxury hotels, such as Kempinski, Banyan Tree, Four Seasons and Park Hyatt, before joining Hilton Shanghai City Center in 2024.*

# Roast Beef Carpaccio

**Make Osteria Twelve-16's signature dish with chef Marco.**

The Roast Beef Carpaccio is a signature starter at Osteria Twelve-16, featuring Australian beef tenderloin marinated in salt, brown sugar, and truffle oil. The beef is roasted and slow-cooked until perfectly pink in the center, then chilled and sliced thinly for a delicate texture. It's served with Cipriani sauce, a classic blend of mayonnaise, Tabasco, and Worcestershire sauce, along

with a flavorful arugula pesto, freshly grated Parmesan cheese, and a drizzle of truffle oil.

## **Beef Ingredients & Instructions:**

300g	Australian beef tenderloin
100g	Salt
100g	Brown sugar
15g	Truffle oil
	Corn oil (for cooking)



1. Sprinkle the beef tenderloin with salt, brown sugar and truffle oil. Let it marinate in the fridge for 4 hours, then rinse with water and pat dry with a paper towel.
2. In a large pan, warm up some corn oil and sear the tenderloin on all sides, then finish the cooking in the oven until medium-rare at core temperature. Let rest, then chill in the fridge until 4 degrees Celsius.





**Cipriani Sauce Ingredients & Instructions:**

150g Double cream  
25ml Double cream  
15g Worcestershire sauce  
15g Brandy  
12g Dijon mustard  
1g Tabasco

In a bowl, mix all the ingredients together.

**Arugula Pesto Ingredients & Instructions:**

100g Fresh arugula  
60g Parmesan cheese, grated  
15g Pecorino cheese, grated

75g Almond fillets, toasted until brown  
75g Extra virgin olive oil  
3g Salt

Blend all ingredients together in a blender until smooth.

**Preparation:**

1. Slice the tenderloin 1mm thin and place it nicely on the plate.
2. Season the carpaccio with a few spoons of Cipriani sauce and arugula pesto.
3. Finish with freshly grated parmesan on top.

Osteria Twelve-16, located in the Hilton Shanghai City Center, serves delicious traditional Italian food in a warm, inviting space. With an open kitchen, you can enjoy a semi-buffet for lunch or choose from a tasty à la carte menu for dinner. The restaurant has three areas: Mascarpone, perfect for desserts and afternoon tea, Espresso, a casual spot to sip coffee at the bar, and Al Forno, where you'll find a fantastic pizza oven baking fresh pies every day. Whether you're relaxing or enjoying Italian favorites, Osteria Twelve-16 makes every meal special.

# International School Curriculums at a Glance

**Learn the lingo of high school curriculum.**

**W**hen choosing an international school for your child, families should consider the bigger picture and whether they will be returning home or if another international move is in their future. To help parents in selecting the appropriate curriculum for their child, here is a quick guide.

## International Baccalaureate

International Baccalaureate Organization (IB) offers programmes at four different levels: PYP (Primary Years Programme, ages 3-12), MYP (Middle Years Programme, ages 11-16), DP (Diploma Programme for secondary school, ages 16-19) and CP (Career-related Programme).

- The IB programme encourages students to think critically and independently, with inquiry-based tasks. IB Diploma candidates will focus on six individual topics for graduation of secondary school.
- IB Diploma graduates, depending on their final test scores, can have classes taken applied to university credits. However, it is important to do your due diligence, as each university will have different policies about credit transfers.
- This European-based diploma certification is recognized worldwide.

## Advanced Placement

Advanced Placement (AP) is a program

developed and administered by the College Board, the organization responsible for the SAT (formerly known as the Scholastic Aptitude Test), allowing students to obtain college credits while still in high school.

- AP classes give students the experience of an introductory level college class that qualifies learners for more advanced classes upon entrance to North American colleges.
- Nearly all American and Canadian universities accept AP scores for credit. Again, it is important to do research, as each university will have different policies about credit transfers.
- It is not a two-year requirement compared to the IB Diploma programme or A-Levels.
- It is an American-based diploma certification recognized mainly in the USA and select universities worldwide.

## IGCSE

The International General Certificate of Secondary Education (IGCSE) is a British curriculum which prepares students for the IB and A-Level examinations. English language is the heart of the curriculum, ensuring students' ability to communicate fluently in the world's most widely spoken language.

- The IGCSE programme is a precursor to A-Level, AP, and IB certification, and

is completed in the first two years of high school.

- It is an exam-based curriculum that tests the knowledge of individual subjects, awarding one IGCSE qualification for each successful subject exam.
- There are three types of board exams for the IGCSE: Cambridge IGCSE, Pearson Edexcel International GCSE and Oxford AQA. They all take place during different times of the year.

## A-Levels

A-Level exams are subject-based qualifications achieved as part of the General Certificate of Education (GCE) offered in the UK curriculum courseware. This is particularly relevant for students in secondary schools.

- A-Levels are required for university entrance, and conditional acceptance by UK post-secondary institutes are based on students' grades.
- Students can expect to take three A-Levels in order to obtain offers from various universities, and most pick courses based on their desired degree.
- Many of the higher-level degree subjects do require specific A-Levels for acceptance to the programme, so it is important to research university requirements before starting the programme.



### French Baccalauréat

Also known as Le Bac, it is the secondary school national curriculum in France that is internationally recognized and prepares students for higher education worldwide. It has a reputation of being rigorous and has subject specializations, leading many global universities to grant college credit to Baccalaureate holders.

- Examinations include a written French exam and an oral French exam in 11th grade, a philosophy exam, Grand Oral exam, and two special subject exams in 12th grade.
- Students take a wide range of subjects, including literature, math, sciences, history, philosophy, and languages. Students can specialize in sciences, humanities, or economics.
- There are three categories of Baccalauréat: general, professional, and technological. General is the most common, and students can choose from three different streams: Literature (bac L), Sciences (bac S) and Economics and Social Sciences (bac ES).

### German DIA

The Deutsches Internationales Abitur (DIA) is the German international high school diploma that provides students with a globally recognized university entrance qualification.

- It's designed to be comprehensive and

encourage independent thinking and problem-solving, allowing students to develop their talents in various areas before specializing in a field of study in grade 12.

- In grades 11 and 12, students choose a set of subjects and participate in exams to demonstrate their knowledge and skills.
- Students are encouraged to develop proficiency in at least two languages, often including German and another language like English, French, or Mandarin.
- DIA curricula can include various subjects like History (bilingual), Geography (English), Physics, Chemistry, Biology (bilingual), a second foreign language, religious studies, art/music, and physical education.

### Japanese EJU

The Examination for Japanese University Admission for International Students (EJU) is a standardized test used to assess the academic abilities and Japanese language proficiency of international students applying to Japanese universities.

- The EJU consists of four main subjects:

Japanese as a Foreign Language: Assesses reading, writing, and listening comprehension.

Science: Requires selection of two subjects from Physics, Chemistry, and Biology.

Japan and the World: Covers a range of topics related to Japanese and world history, politics, and society.

Mathematics: Students choose between Course 1 (for liberal arts/science) or Course 2 (for higher-level programs).

### Hong Kong HKDSE

The Hong Kong Diploma of Secondary Education (HKDSE) is a standardized examination for senior secondary school students. It serves as a qualification for university admissions.

- Students typically take four core subjects: Chinese Language, English Language, Mathematics, and Liberal Studies/Citizenship and Social Development, along with one to four elective subjects.
- It's considered difficult, particularly for core subjects like Chinese and English.
- Grades are assigned on a scale of 1 to 5, with 5\* and 5\*\* indicating the highest levels. Many students aim for a "3322" score of at least a Level 3 in Chinese and English, and at least a Level 2 in Mathematics and Liberal Studies to meet basic university admission requirements.

# International Schools

Learn about international  
school options, from  
preschool to high school



# Quick Compare

Schools	Area/District	Age Range	Tuition	IB	AP	A Level	IGCSE	Curriculum
Concordia International School Shanghai	Pudong	Preschool to Grade 12	¥243,000 - ¥320,000/year		✓			American Curriculum
Deutsche Schule Shanghai	Yangpu/ Qingpu	Nursery to Grade 12	Nursery: ¥166,500/year School: ¥208,600/year					DIA German Curriculum
Dulwich College Shanghai Pudong	Pudong	Toddler to Year 13	¥274,000 - ¥399,750/year	✓			✓	English National Curriculum
Dulwich College Shanghai Puxi	Minhang	Toddler to Year 13	¥137,800 - ¥390,000/year	✓		✓	✓	English National Curriculum
Harrow International School Shanghai	Pudong	18 months to 18 years	¥280,000 - ¥380,000/year		✓	✓	✓	Harrow Early Years Curriculum & English National Curriculum
Shanghai French School	Yangpu/ Qingpu	Pre-Kindergarten to Grade 12	¥118,000 - ¥197,570/year					National French Curriculum; 4 language streams
Shanghai American School (SAS)	Pudong/ Minhang	Pre-Kindergarten to Grade 12	¥278,000 - ¥336,100/year	✓	✓			American Core Curriculum
Shanghai Community International School (SCIS)	Changning/ Pudong	Nursery to Grade 12	¥146,000 - ¥324,500/year	PYP, MYP & DP				International Baccalaureate
Shanghai Hong Qiao International School (HQIS)	Changning	18 months to 18 years	¥173,500 - ¥260,000/year	PYP	✓			Emergent Curriculum; PYP Programme; American Curriculum
Shanghai Livingston American School	Changning	Nursery to Grade 12	¥133,825 - ¥221,823/year		✓			Common Core aligned California Curriculum
The British International School Shanghai (BISS) Puxi	Minhang	2 to 18 years	¥252,200 - ¥359,870/year	✓			✓	English National Curriculum; Integrated Dutch School
Wellington College International Shanghai	Pudong	Pre-Nursery to Year 13	¥283,900 - ¥379,600/year	IBDP			✓	English EYFS curriculum, English National Curriculum
Yew Chung International School of Shanghai (YCIS)	Changning/ Pudong	Kindergarten (K1) to Year 13	¥162,000 - ¥348,600/year	IBDP			✓	YCIS International Curriculum, HKDSE

Information is for reference only, please contact the school directly for detailed prices and policies



Allison Hung



# College Anxiety? YCIS Has You Covered

A safe pair of hands for students and parents on the college admissions journey. *By Lynn Yen*

We sat down with Allison, YCIS Careers and University Guidance Coordinator, for a chat about her expert advice on college applications. Hear what she has to say.

## The role of YCIS's CUGO team

First and foremost, we aim to empower students and families with knowledge and accurate information to make decisions with best-fit schools in mind. We have a well-structured curriculum that allows students to get to know themselves - their learning style, their personality, and their needs, because to find the right fit, you've got to know what you're looking for first.

A highlight in our CUGO curriculum is a job shadow experience in Year 11. It's a good opportunity to see if what a student is imagining aligns with what they might do one day. They also undergo CV training, CV selection, and an interview process with the host organization to make it as realistic as possible.

One of our most important roles is to provide personal support and guidance from Year 10 onwards, so that we get to know the students very well. We get to know their strengths, their families, and their needs, in order to maximize the experience in high school.

## What colleges look for in candidates

I used to be a US admissions representative, and I was looking for students who were genuinely passionate about attending the university. Because, as much as the university is selecting the student, they also want that student to select the university for the right reasons. The application should have intention. Know what you're looking for, and know what you're stepping into. The university can provide an environment where you fit into the culture. You can contribute to the university, and you can thrive. It's a win-win situation.

The CUGO team helps to make a very thoughtful application. It is with a long and thorough thought process that a list of universities is selected. It is not based on, 'my mom said I should go there.' No, it fits what criteria you're looking for. In our curriculum, since Year 10, we teach students how to look for this information. And, we limit the number of universities they apply to, to focus their attention.

## Preparing students for applying to multiple universities

It is very normal for one student to apply





to schools in three countries. Time management is really important. We work in Year 12 to have meetings to understand priorities, and then plan strategically to determine a timeline.

I get lots of questions from parents about, 'What activities will get my kid into Cambridge?' It's not particular activities, but it's the concept of the activities. For the US, all activities count, be it sports, leadership, charity, or volunteering. However, in the UK, they have the concept of super-curriculars, activities that match the major you're going for. For example, when applying for a G5 university in engineering, a supercurricular would be an engineering competition or internship.

More parents are looking to stay in Asia. With YCIS offering the Hong Kong Diploma of Secondary Education (HKDSE) Chinese and English curriculum starting next school year, students are well prepared for applying to top universities in the city. Last year we received offers from several elite Hong Kong universities, including HKU and CUHK for medicine, and HKUST for economics.

This year, two YCIS Shanghai students earned a full scholarship to HKU. Outside of Hong Kong, YCIS Shanghai students find success at top Asian universities, including KAIST in South Korea.



### The parents' role

We need to come from a place of sympathy because the college application process is very challenging for parents. It marks the first time they are realizing that their kids are leading the decision-making, and it's slightly out of their control.

Also, in the age of social media, parents often encounter misinformation, which creates a lot of anxiety. Half the time, content creators are not educators. Even if you are the most level-minded person, you will always ask yourself, 'Am I doing enough for my child?'

So, to support their children, parents should encourage kids to explore more and make mindful decisions while maintaining confidence in their child's abilities and staying level-headed. It is also essen-

tial to seek out accurate information through the guidance of counselors because we're here.

At YCIS, we provide a lot of firsthand information, such as university visits and our annual university fair. We ask the universities to visit so parents can get information directly. Coffee mornings, regular parent meetups, are also held twice a semester. There are also individual meetings. We are a small school and a tight-knit community. Sometimes our parents will drop by campus, or I'll come to the gate to chat with them. We also conduct workshops. Apart from teaching their kids, we teach parents about the university application process. All we want to do is give them the right information, so they stay calm in all of this chaos. **SF**





"We educate the whole child—  
intellectually, physically,  
emotionally, socially, and  
spiritually. Life success starts  
with Concordia."



## Concordia International School Shanghai 上海协和国际外籍人员子女学校



<b>Date founded</b>	1998
<b>Grade level</b>	Preschool to Grade 12
<b>Curriculum</b>	American Curriculum with Advanced Placement
<b>Languages taught</b>	English, Mandarin, Spanish
<b>School strengths</b>	Academics, Athletics, Fine arts
<b>Tuition</b>	Preschool and Pre-Kindergarten: ¥243,000/year; Kindergarten to Grade 5: ¥305,000/year; Grade 6 to 8: ¥312,500/year; Grade 9 to 12: ¥320,000/year
<b>Description</b>	Founded in 1998, Concordia International School Shanghai is a co-educational day school that offers a comprehensive American-style education to students from Preschool through High School. Located in Jinqiao, an international community in Shanghai's Pudong New Area, Concordia is dedicated to cultivating the unique gifts of our students in any areas they are passionate about. The school is known for its commitment to educational excellence and for providing well-developed sports, fine arts, service, and applied learning programs. Concordia's approach to education focuses on nurturing every student through a journey of personal and academic growth, offering innovative academic programs, enriching extracurricular activities, and instilling strong character and values. The school is dedicated to helping each student achieve a bright and prosperous future.



[www.concordiashanghai.org](http://www.concordiashanghai.org)



**Email:**  
admissions@concordiashanghai.org



**Telephone:**  
+86 (21) 5899 0380



**Address:**  
999 Mingyue Road, Jinqiao, Pudong New Area



**WeChat:** ConcordiaSH协和  
**Admissions contact:** Vina Peng





"This world's largest German-speaking 'Excellent German School Abroad' with two Eurocampuses in Shanghai provides a welcoming culture and caring environment for our children to endeavor, experience, and discover the world and the universe together."



## Deutsche Schule Shanghai 上海德国外籍人员子女学校



<b>Date founded</b>	1995
<b>Grade level</b>	Nursery to Grade 12
<b>Curriculum</b>	Deutsches Internationales Abitur (DIA), German curriculum with German international high school diploma
<b>Languages taught</b>	German, Mandarin, English, French, Spanish, Latin
<b>School strengths</b>	Children's holistic personality development, STEM-friendly School
<b>Tuition</b>	Nursery ¥166,500; Kindergarten: ¥153,600/year; School: ¥208,600/year
<b>Description</b>	The DIA is an internationally acclaimed college prep curriculum and diploma issued exclusively for German schools abroad. In kindergarten, the Berlin Education Program teaches health, social and cultural life, mathematics, art, nature, environment, technology and communication. The school has developed a curriculum for children to learn methods for analyzing, shaping, and developing their own learning experience. From 2022-23, a German language program is offered for those not at a sufficient level. The program is intensive classes with native speakers trained and certified in Germany. Afterwards, students are fully integrated into the regular German curriculum.



[www.ds-shanghai.de](http://www.ds-shanghai.de)



**Email:**  
admissions@ds-shanghai.de



**Telephone:**  
+86 (21) 6897 5508 ext. 355 (Yangpu campus)  
+86 (21) 3976 0555 ext. 355 (Hongqiao campus)



**Address:**  
758 Jiangwancheng Road, Yangpu District (Yangpu campus)  
350 Gaoguang Road, Qingpu District (Hongqiao campus)



**Admissions contact:**  
Mrs. Jiang (Yangpu & Hongqiao campus)



"Our students have the skills and motivation to make a positive difference in the world."



## Dulwich College Shanghai Pudong 上海德威外籍人员子女学校(浦东)



<b>Date founded</b>	2003
<b>Grade level</b>	Toddler to Year 13
<b>Curriculum</b>	English National Curriculum, IGCSE, and IB Diploma
<b>Languages taught</b>	English, Mandarin, French, Spanish
<b>School strengths</b>	Top academic results, Performing Arts, STEAM, Sports, Global Citizenship
<b>Tuition</b>	¥274,000 - ¥399,750/year



**Description** Founded in 2003, Dulwich College Shanghai Pudong is recognised for its outstanding academics based on robust holistic education that prioritises student wellbeing. Dulwich Pudong IB students consistently achieve results significantly above the global average and have alumni matriculated at Oxbridge, Ivy League and other leading universities across the world. Extra-curricular activities range from music, sports, technology as well as opportunities in service, sustainability and leadership. Forty-three nationalities create a vibrant intercultural environment for students to develop a truly global outlook.



<https://shanghai-pudong.dulwich.org>



**Email:**  
admissions.shanghaipudong@  
dulwich.org



**Telephone:**  
+86 (21) 3896 1200



**Address:**  
*Main campus:* 266 Lan'an Road, Jinqiao, Pudong New Area  
*DUCKS campus:* 425 Lan'an Road, Jinqiao, Pudong New Area



**Admissions contact:**  
Anna Nikonenko, Head of Admissions





## Dulwich College Shanghai Puxi

### 上海德威外籍人员子女学校（浦西）

"We provide a truly holistic education that emphasises academic excellence coupled with a rich extracurricular programme. Our students Live Worldwide, and are leaders in sustainability and global citizenship"



<b>Date founded</b>	2016
<b>Grade level</b>	Toddler to Year 13
<b>Curriculum</b>	English National Curriculum, IGCSE, IB Diploma and A-Level
<b>Languages taught</b>	English, Mandarin, Spanish, French
<b>School strengths</b>	Dulwich is academically selective and students are incredibly well supported by highly professional and caring teachers. The College is very green with state-of-the-art play and academic facilities, including an Olympic-size swimming pool and 500-seat theatre.
<b>Tuition</b>	¥137,800 - ¥390,000/year
<b>Description</b>	Dulwich College Shanghai Puxi is a leading international school in Shanghai, providing a world-class holistic education supported by highly-qualified teachers and state-of-the-art facilities. Our curriculum is rigorously personalised to each and every student to ensure academic, physical, social and emotional growth. We are a values driven community with a focus on student leadership, service, sustainability and global citizenship.



[www.shanghai-puxi.dulwich.org](http://www.shanghai-puxi.dulwich.org)



**Email:**  
admissions.shanghaipuxi@dulwich.org



**Telephone:**  
+86 (21) 3329 9310



**Address:**  
2000 Qianpujing Road, Maqiao, Minhang District



"Educational  
Excellence for Life  
and Leadership"



## Harrow International School Shanghai

### 上海哈罗外籍人员子女学校



#### Date founded

August 2016

#### Grade level

Harrow Cubs to Year 13 (18 months to 18 years)

#### Curriculum

Early Years follows the Harrow Early Years Curriculum (AHEYC). Pre-Prep and Prep are based on the English National Curriculum, culminating in IGCSE and AP for Year 10 and Year 11; A Level at Sixth Form (Year 12 and Year 13)

#### Languages taught

English, Mandarin, Spanish

#### School strengths

450 years of Harrow heritage, tradition, and global excellence; Mandarin Core Curriculum; Leadership and Service Programme; Academic Excellence: 58% of grades achieved A\* and 90% of grades achieved A/A\* in A Level 2022; All school leavers were accepted by their first-choice university including Cambridge University; Unique learning opportunity for children aged between 18 months to 24 months at Harrow Cubs.

#### Tuition

¥280,000 - ¥380,000/year

#### Description

A Harrow Shanghai education is based on the same ethos and identity that has characterised a Harrow education in the UK for centuries and here you will find a school where the best of Western and Eastern traditions, history and heritage are seamlessly fused.



[www.harrowshanghai.cn](http://www.harrowshanghai.cn)



**Telephone:**  
+86 (21) 6881 8282 ext. 210/280



**Address:**  
588 Gaoxi Road, Pudong New Area



**WeChat:**  
HarrowSH哈罗上海

**Facebook:**  
Harrow International School Shanghai





# Lycée Français de Shanghai (Shanghai French School) 上海法国外籍人员子女学校

"Today in Shanghai  
excellence for everyone.  
Tomorrow in the world,  
success for all."



<b>Date founded</b>	1995
<b>Grade level</b>	Pre-Kindergarten to Grade 12 (2 years old to 18 years old)
<b>Curriculum</b>	4 language streams (General, International American, European English, international Chinese). We also have our unique FLSCO (French As The Language Of Instruction) program for non-French speaking students.
<b>Languages taught</b>	Three mandatory languages: French, English and Mandarin. German or Spanish from Grade 7. International language certifications (Cambridge and IGCSE in English, DELF in French, HSK in Chinese, Dele in Spanish, or Goethe exams in German). Shanghai French School is also a SAT center.
<b>School strengths</b>	Emphasis on plurilingualism, critical thinking, creativity, cultural immersion, academic rigor, European campuses shared with German school, international and diverse community, extra-curricular activities.
<b>Tuition</b>	¥118,000 - ¥197,570/year
<b>Description</b>	As one of the top 10 best French schools in the world, Shanghai French School offers instruction in three languages (French, English, and Chinese), is part of the AEFE (Agency for French Teaching Abroad) network. It is an international nonprofit school which welcomes over 1,500 students of more than 60 nationalities, from Pre-kindergarten to the French Baccalauréat on its Qingpu and Yangpu campuses. The internationally recognized French Baccalauréat fosters critical thinking and balanced assessment, opening doors to top universities like McGill, Oxford, Fudan, NYU, Jiao Tong, Sciences Po, and HEC.



[www.lyceeshanghai.com](http://www.lyceeshanghai.com)



**Email:**  
admissions@lyceeshanghai.com  
Online registration: <https://lfs.eduka.school/>



**Telephone:**  
+86 (21) 3976 0555 ext. 501  
+86 (21) 6897 6589 ext. 758



**Address:**  
*Qingpu campus:* 350 Gaoguang Road, Qingpu District  
*Yangpu campus:* 788 Jiangwancheng Road, Yangpu District



**WeChat official account:**  
French\_school



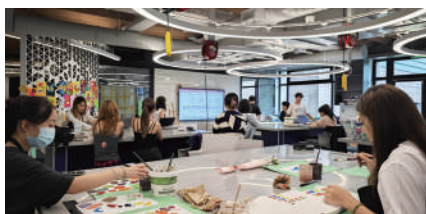
"Since we think  
we can, we can."



## Shanghai American School (SAS) 上海美国外籍人员子女学校



<b>Date founded</b>	1912
<b>Grade level</b>	Pre-K to Grade 12
<b>Curriculum</b>	American core curriculum, AP and IB diploma programmes
<b>Languages taught</b>	English, Mandarin, French, and Spanish
<b>School strengths</b>	Non-profit, university-level facilities (aquatic centers, performing arts centers, four black box theaters, nine design-maker spaces, gyms, Olympic-style tracks, and playing fields), world-class educators (73% of faculty hold master or PhD degrees), nine dedicated college counselors, top university placements around the world every year, distinguished signature programs (Microcampus, Innovation Institute, TheEleven), 300+ clubs, sports teams, and activities.
<b>Tuition</b>	Pre-K3 to Pre-K4: ¥278,000/year; Elementary: ¥311,400/year; Middle: ¥319,200/year; High: ¥336,100/year
<b>Description</b>	Shanghai American School, founded in 1912, is mainland China's oldest and most established international school and a leader in education across Asia. With nearly 3,000 students from Pre-K to Grade 12 on two campuses, SAS fosters a diverse, inclusive community of over 40 nationalities. At SAS, learning goes far beyond academics. Offering AP and IB programs, SAS emphasizes critical thinking, communication, collaboration, creativity, and global citizenship, equipping students with the skills to thrive in an ever-changing world. With a vibrant community and a mission to develop ethical global citizens, SAS inspires students to pursue their passions and make meaningful contributions to the world.



[www.saschina.org](http://www.saschina.org)



**Email:**  
admissions@saschina.org

**Book a tour :**  
<https://www.saschina.org/plan-visit/book-tour>



**Telephone:**  
+86 (21) 6221 1445 ext. 3305 (PD) 2152 (PX)



**Address:**  
*Pudong:* 1600 Lingbai Road, Pudong New Area  
*Puxi:* 258 Jinfeng Road, Minhang District



**WeChat:**  
SASEagles



"Where Lifelong Learning Begins"



## Shanghai Hong Qiao International School 上海虹桥国际外籍人员子女学校



**Date founded**

1997

**Grade level**

Nursery to Grade 12 (18 months to 18 years old)

**Curriculum**

Emergent Curriculum (18 months – 3 years old), IB-PYP (3 – 12 years old), American Curriculum Standards (Common Core & AP, 12 – 18 years old)

**Languages taught**

Language of Instruction: English; Additional Language: Mandarin, Japanese, Korean, French

**School strengths**

First-class international education; 100% progression to top universities; Fully comprehensive K-12 curriculum; Small classes; Modern facilities and green design; College counseling; Located in cosmopolitan Gubei area

**Tuition**

¥173,500 – ¥260,000/year

**Description**



HQIS offers a balanced curriculum from nursery to high school based on IB PYP and AP, supported by personalized college and career counseling. There are built-in opportunities for students to develop themselves through student societies and service committees. The curriculum offers academic challenge, breadth, and modern skills. The campus has world-class facilities with a green school design. Students are encouraged to be guardians of the planet and ambassadors to the community, to lead with their hearts, achieve with their minds and grow in knowledge and skills. HQIS believes in inclusion, the development of character, identity, respect, and global leadership.



[www.hqis.org](http://www.hqis.org)



**Email:**

admissions@hqis.org



**Telephone:**

+86 (21) 6268 2074; +86 (21) 6268 9773



**Address:**

218 South Yili Road, Changning District



**WeChat:**

RBIS-HQIS



## Shanghai Community International School 上海长宁国际外籍人员子女学校

"To develop inquiring, knowledgeable, and caring learners who contribute positively to their communities."



### Date founded

1996

### Grade level

Nursery to Grade 12

### Curriculum

International Baccalaureate - Primary Years Programme, Middle Years Programme & Diploma Programme

### Languages taught

Primary Language Programmes: English. Additional Language: Mandarin, French, Spanish, Korean, and Dutch

### School strengths

Rigorous academic programmes, Authorised IB Continuum World School, Apple Distinguished School (2024-2027) Expansive extra-curricular opportunities, Truly international and diverse community, Welcoming atmosphere, Holistic approach to education, Inquiry-based learning, Focus on student well-being, Differentiated learning, Student Support.

### Tuition

¥146,000 - ¥324,500/year

### Description



Established in 1996 as one of Shanghai's first international schools, Shanghai Community International School serves as an essential cornerstone in the lives of many within the international community. SCIS provides a premier educational experience that fosters academic rigor, critical thinking, and global citizenship. Our Early Childhood and Lower School students develop into holistic learners within our Primary Years Programme (PYP). In the Upper School, students undertake the Middle Years Programme (MYP) equipping them with the skills needed to excel in the highly coveted IB Diploma and at top universities worldwide.



[www.scis-china.org](http://www.scis-china.org)



### Email:

[admissions@scis-china.org](mailto:admissions@scis-china.org)



### Telephone:

+86 (21) 6261 4338 (HQ)  
+86 (21) 6295 1222 (HQ ECE)  
+86 (21) 5812 9888 (PD)



### Address:

*Hongqiao campus:* 1161 Hongqiao Road, Changning District

*Hongqiao ECE campus:* 2212 Hongqiao Road, Changning District

*Pudong campus:* 198 Hengqiao Road, Zhoupu, Pudong New Area



### WeChat:

SCIS-CHINA



# Why SCIS is the right fit for your child



With world-class facilities and a development-focused learning, SCIS ignites passion, cultivates essential skills, and fuels a discovery of the self. SCIS is more than academics, it's a launchpad for lifelong learning and success.

**Middle Years Programme at SCIS lays the foundation to building core skills that allow kids to succeed academically, socially and emotionally.**

## Courses covered in the MYP

- Language and Literature
- Language Acquisition
- Mathematics
- Sciences
- Design
- Individuals and Societies
- Physical & Health Education
- The ARTS

*"As an SCIS parent for over 10 years, I've found the Middle Years Program (MYP) invaluable. It encourages critical thinking, problem-solving, and independence—skills my daughters will carry for life. Through student council, clubs, and sports, they've developed confidence, teamwork, and leadership. SCIS nurtures not just academics but also self-discovery, helping students explore their passions in a welcoming environment. I've been continually inspired by how the MYP has shaped my children into confident, independent individuals."*  
- Cindy, Grade 6 Parent



## MYP (Grades 6 to 10) at SCIS: A Strong Foundation for IBDP Success

### Building a Strong Academic Foundation

- Strengthens critical thinking and research skills
- Encourages interdisciplinary connections for DP success

### Fostering Inquiry-Based Learning

- Sparks curiosity and independent thinking
- Develops problem-solving skills

### Developing Key Skills for DP and beyond

- Builds time management and multitasking abilities
- Enhances communication skills for academic success

### Ensuring a Smooth Transition into the DP

- Familiarizes students with IB assessments
- Develops a global perspective and reflective thinking

### A Holistic 360° Learning Experience

- Cultivates collaboration and teamwork
- Builds confidence and self-management skills



Boston University  
Cornell University  
Purdue University  
Rutgers University  
UC San Diego  
University of Chicago  
Imperial College London  
McGill University  
University of Melbourne  
National University of Singapore  
Amongst Others

## The IB Diploma Programme at SCIS leads to success in college and beyond

To learn more about a student's experience at SCIS - Scan the QR code below



Building a lasting partnership with SCIS ensures the ideal environment for growth, a strong foundation in the middle school years, and a pathway to success beyond school. That's why families seeking a progressive education choose SCIS. That's what makes SCIS the right fit for your child.



Accepting applications for G1 currently - apply now



For capacity details at other grade levels - register your interest here



+86 21 6262 4338  
www.scis-china.org  
admissions@scis-china.org





"The mission of Shanghai Livingston American School is to prepare students for academic and personal success."



## Shanghai Livingston American School

### 上海李文斯顿美国外籍人员子女学校



#### Date founded

New for 2025

2003

SLAS has been providing an excellence in education for over 20 years. They have installed new cutting-edge equipment in the primary years computer lab and added several online learning platforms for students. SLAS has adopted the latest Next Generation Science Standards (NGSS) to ensure students are receiving the most up to date material.

#### Grade level

#### Curriculum

Nursery to Grade 12

Common Core aligned California Curriculum with Advanced Placement (AP) accredited by WASC

#### Languages taught

#### School strengths

#### Tuition

#### Description

English, Japanese, Mandarin, Spanish

Small class size, location, financial aid available, dedicated service

¥133,825 - ¥221,823/year

With instruction and activities guided through four core values (proficient communicator, confident individual, creative thinker, compassionate citizen), Shanghai Livingston American School (SLAS) creates an environment of enquiry set against American culture fused with an international perspective, resulting in students receiving an education that prepares them for academic and personal success as global citizens.



[www.laschina.org](http://www.laschina.org)



Email:  
info@laschina.org



Telephone:  
+86 (21) 6238 3511



Address:  
580 Ganxi Road, Changning District



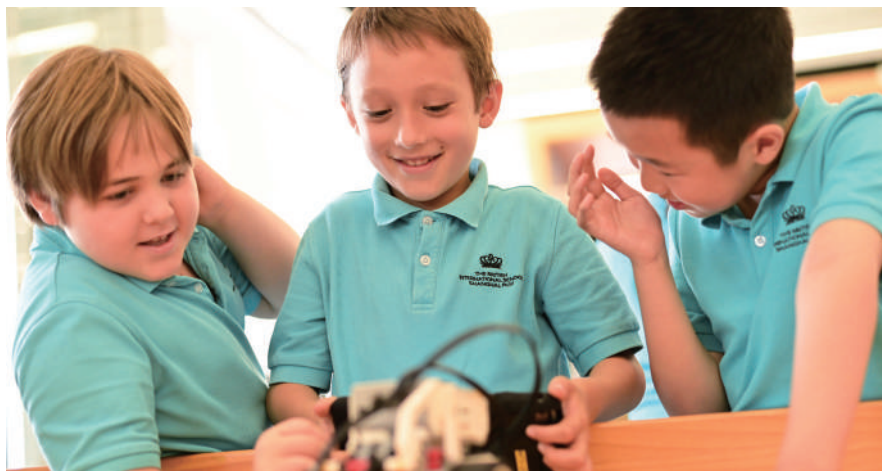
Admissions contact:  
Carlton Lamb





## The British International School Shanghai (BISS) Puxi 上海英国外籍人员子女学校(浦西校区)

"Our students are the best testimony to our school's success. We take great pride in their achievements and in supporting them all to be the best that they can be."



**Date founded**  
**Grade level**  
**Curriculum**  
**Languages taught**  
**School strengths**

2004  
Pre-Nursery to Year 13 (2 years to 18 years)  
English National Curriculum, IGCSE and IB, and an integrated Shanghai Dutch School  
English including EAL programme, French, Korean, Mandarin, Spanish, German  
Academic results, learning philosophy, sports, over 140 extra-curricular and professional coaching activities, unique collaborations with world-renowned US institutions: Juilliard, MIT and IMG Academy, plus UNICEF.

**Tuition**  
**Description**

¥252,200 - ¥359,870/year  
The British International School Shanghai boasts academic standards that are second to none and a curriculum as rich as it is broad. The school prides itself on offering students of over 60 different nationalities the opportunity to perform at their very best, both academically as well as in arts and sports. Following the UK national curriculum from Early Years through to (I)GCSE and on to the International Baccalaureate, the British International School Shanghai has a long pedigree of academic excellence that enables our students to enter the finest universities around the world.



**CAMBRIDGE**  
International Examinations  
Cambridge International School



[www.bisspuxi.com](http://www.bisspuxi.com)



**Email:**  
bpx.admissions@bisspuxi.com



**Telephone:**  
+86 (21) 6221 7542



**Address:**  
111 Jinguang Road, Huacao Town, Minhang District



**WeChat:**  
BISSPuxi | 上海英国学校



"We aspire for academic excellence within a caring, international community, developing well-rounded individuals with strong values and skills to thrive in a global society."



## Wellington College International Shanghai 上海惠灵顿外籍人员子女学校



### Date founded

2014

### Grade level

Pre-Nursery to Year 13

### Curriculum

2 to 5 years old: English EYFS curriculum; 6 to 14 years old: English National Curriculum; 14 to 16 years old: IGCSE; 16 to 18 years old: IB DP

### Languages taught

English, French, Mandarin, Spanish

### School strengths

Academic excellence, Extensive enrichment programme, Global reputation, Daily Mandarin provision, World class facilities

### Tuition

¥283,900 - ¥379,600/year

### Description

Opened in August 2014 and located in the New Bund area, Wellington College International Shanghai is a fully co-educational day school with over 1,500 pupils, aged 2 to 18 years old. Consistent with the ethos of its prestigious partner in the UK, the College seeks to develop the 'Wellington Identity' in every child. Wellingtonians are encouraged to be Inspired, Intellectual, Independent, Individual, and Inclusive. Boasting a state-of-the-art campus, Wellington has built a vibrant community where all pupils strive to achieve academic excellence and engage in a comprehensive range of opportunities in music, performing arts, and sports.



[shanghai.wellingtoncollege.cn](http://shanghai.wellingtoncollege.cn)



### Email:

[admissions.shanghai@wellingtoncollege.cn](mailto:admissions.shanghai@wellingtoncollege.cn)



### Telephone:

+86 (21) 5185 3885



### Address:

*Wellington:* 1500 Yaolong Road, Pudong New Area  
*Early Years Centre:* 195 Tongwan Road, Pudong New Area



### WeChat:

WellingtonCollegeSH





# Yew Chung International School of Shanghai (YCIS)

## 上海耀中外籍人員子女學校

"We offer an education characterised by a multicultural and bilingual learning environment, with an emphasis on academic excellence, equipping students with the tools necessary for their future success."



**Date founded**  
**Grade level**  
**Curriculum**  
**Languages taught**  
**School strengths**

Founded in Hong Kong in 1932, established in Shanghai in 1993  
Kindergarten (K1) to Year 13  
YCIS International Curriculum (Y1-Y9), IGCSE, IBDP, HKDSE (HK Secondary Diploma)  
English, Mandarin, Spanish (in Secondary school)  
Chinese Language & Culture, Placement at top global universities, Academics, Music, Art, Co-Curricular Activities, Sports

**Tuition**  
**Description**

¥162,000 - ¥348,600/year  
YCIS Shanghai was the first independent international school in Shanghai officially recognised by, and registered with, the Chinese government. It is also the only school in all of Asia to have received the Cambridge Award for Excellence in Education. Renowned for its unique multicultural and bilingual approach to education, YCIS has a special focus on students learning both English and Mandarin at a high level. YCIS has six campuses in prime locations in both Puxi and Pudong. YCIS students consistently earn Top in World, Top in China, and High Achievement awards on their IGCSE examinations, achieve outstanding IB results, and go on to matriculate at the world's top universities. YCIS's international education develops caring, well-rounded, global citizens.



[www.ycis-sh.com](http://www.ycis-sh.com)

**Email:**  
sh.enquiry@ycis.com  
**Telephone:**  
+86 (21) 2226 7666  
**WeChat:**  
YCISShanghai上海耀中

**Address:**  
*Puxi Ronghua Campus (ages 2-6):* 59 West Ronghua Avenue  
*Puxi Hongqiao Campus (ages 6-11):* 11 Shuicheng Road  
*Puxi Gubei Campus (ages 11-18):* 18 West Ronghua Avenue  
*Pudong Regency Park (ages 2-9):* 1817 Huamu Road  
*Pudong Century Park Campus (ages 9-18):* 1433 Dongxiu Road  
*Lingang Campus (ages 2-8):* 1 Yinlian Road

# Bilingual & Local Schools

Find private bilingual and public local schools with international divisions





# Quick Compare

School	Area/ District	Age Range	Tuition	IB	AP	A Level	IGCSE	Curriculum
Hiba Academy Shanghai	Pudong	Grades 1 to 12	¥239,000-¥292,000/year	IBDP			✓	Chinese National Curriculum; International Curriculum Framework
Hongwen School	Pudong	Grades 1 to 12	ES: ¥66,000; MS: ¥76,000; HS: ¥10,500/ semester	IBDP		✓	✓	Chinese National Curriculum, Bilingual Curriculum
Jinrui School Shanghai	Baoshan	Grades 1 to 12	¥120,000-¥150,000/year			✓	✓	Chinese National Curriculum, Bilingual Curriculum
Living Word Shanghai	Minhang	Grades 1 to 12	¥58,000-¥89,000/ semester		✓	✓		Shanghai National Curriculum; American Curriculum
Nord Anglia Chinese International School Shanghai	Minhang	Grades 1 to 12	¥154,000-¥240,000/year	IBDP		✓		Shanghai National Curriculum Integrated With International Elements
Shanghai Concord Bilingual School Pudong	Pudong	Grades 1 to 12	¥82,500-¥99,000/ semester					Five key stages of education in England with Chinese compulsory education
Shanghai Concord Bilingual School Puxi	Huangpu	Grades 1 to 12	¥82,000-¥90,000/ semester					Chinese National Curriculum, the International Curriculum, and Project-Based Learning (PBL)
Shanghai Gold Apple School	Pudong	2 years - Grade 12	¥80,000-¥128,000/year					Chinese Curriculum K12, American Curriculum K12, Cambridge Curriculum K12
Shanghai Liaoyuan Bilingual School (LYBS)	Minhang	Grades 1 to 12	International High School: ¥172,000/year	IB PYP, IB MYP	✓	✓		Chinese National Curriculum, Canadian Ontario Secondary School Diploma, US High School Certificate
Shanghai New Epoch	Chong-ming	Grades 1 to 12	¥31,000-¥78,000/ semester		✓	✓		EJU (Exam for Japanese University Admission for International Students)
Shanghai SMIC Private School	Pudong	Kindergarten to Grade 12	¥36,000-¥83,000/semester (gov subsidy: ¥21,750 - ¥20,750/semester)		✓			Chinese Curriculum for Chinese Track, American-based Curriculum
Shanghai Songjiang Aijiu	Songjiang	Grades 1 to 12	¥60,000-100,000/ semester					Chinese National Curriculum, Bilingual Curriculum
Shanghai United International School (SUIS Schools)	Various	Grades 1 to 12	Contact campuses for details	IBDP	✓	✓	✓	Chinese National Curriculum, BC (British Columbia)
Vanke DTD Primary & Middle Schools	Minhang/Pudong	Grades 1 to 12	¥70,000-¥110,000/semester	IBDP, IBCP	✓	✓	✓	Chinese National Curriculum, Bilingual Curriculum
Yew Wah International Education School (Lingang Campus)	Pudong	Grades 1 to 12	¥158,000- ¥265,000/year			✓	✓	Integrated Curriculum

Information is for reference only, please contact the school directly for detailed prices and policies

# The Power of Coaching Conversations

Empowering kids and parents one question at a time. *By Dean Clayden*



**P**icture this: Your child is sitting at the kitchen table, glaring at a half-finished homework assignment. The classic parent response might be to swoop in with answers, “Just add those numbers!” or pep talks, “You’ve got this!” But what if instead, you sat beside them, and asked, “What part of this feels tricky right now?”

Welcome to the world of coaching conversations—a simple yet transformative way to support your child by asking thoughtful questions instead of handing out solutions. Think of it as swapping your fix-it hat for a curiosity cap. By ask-

ing questions like “What’s one step you could try?” parents nurture self-reliance while strengthening their relationship with their child.

Coaching conversations empower parents to guide their children—thoughtfully by replacing telling with curiosity-driven questions. This approach builds independence by encouraging children to reflect and problem-solve. Over time, this fosters resilience and boosts confidence by letting children own their successes and reflect and learn from their mistakes. Children are also encouraged to articulate their feelings and navigate chal-

lenges, which helps to strengthen their emotional intelligence.

Here’s some tips on how you might use this approach at home.

## “Let Me Think...” Building Independent Problem-Solvers

Coaching questions like “What’s one small step you could try?”-or-“What worked well the last time?”-do something magical: they hand the microphone back to your child. Instead of relying on you for answers, children learn to brainstorm, experiment, and trust their own judgment. Over time, this builds resilience and crea-



tivity—skills that outlast any homework task or worksheet.

### Helping Children Name and Navigate Their Feelings

When frustration or anxiety strikes, questions like “What’s feeling hardest about this?”-or-“What word or phrase best describes what you’re feeling right now?”-help children pause and reflect. This isn’t just about solving the problem. It’s about teaching them to recognise and manage emotions. You might ask, “If your best friend/favourite toy/character had this problem, what advice might they give?”-These questions aren’t magic spells, but they ignite a quiet confidence and help to shift perspectives on the current situation or challenge.

### From Power Struggles to Teamwork

Ever found yourself in a “Because I said so!” standoff? Coaching flips the script. Asking, “What would make this routine easier for you?”-or-“What’s your plan for getting ready on time?”-invites collaboration. Children feel heard, and you avoid the tug-of-war. Giving children a range of options helps them to make an informed choice. Asking, “What other solutions could you try?” and “Which of these options is the best?” gives children a range of choices that can be opened up through conversation.

### Confidence Boosters (for Everyone!)

When a child solves a problem themselves—even imperfectly—it’s a win. Questions like “What are you proud of today?”-or-“What did you learn from that mistake?”-turn everyday moments into confidence-building opportunities. And guess what? Parents get a boost too, watching their kids grow into capable little humans. As a bonus, you’ll gain insight



into their thinking without the dead-end question of “How was school?”

### Deeper Connections, Fewer Lectures

Coaching conversations aren’t just for when problems or crises hit. Try sprinkling questions into downtime or meal times: “What made you laugh today?”-or-“If you could invent a new family tradition, what would it be?”-These chats build trust and show children that their thoughts matter. Plus, you might just crack up over their wild answers.

### Sample Questions to Keep in Your Back Pocket:

*“What’s your goal for today, this week, this semester?”*  
*“What’s working so far?”*  
*“What is one small step you could take?”*  
*“What can I do, without taking over?”*  
*“What would success look like to you?”*

Parents and teachers are seeing the benefits of this approach. We interviewed one parent who took part in a coaching training workshop. She had this to say about coaching conversations:

“It sounds stupid, but as mothers we tend to want to bring solutions to our children...

I applied those simple principles of not trying to give solutions, but just listen and ask questions. We see and give the reflection back, and I saw the difference. It was amazing.”

### Building Resilience Through Coaching Conversations

Resilience isn’t about shielding our children from storms—it’s about teaching them to dance in the rain. Coaching conversations aren’t about being a perfect parent—they’re about being a present one. Some days, you’ll nail it; other days, you won’t. The goal is progress, not perfection. Over time, these small shifts in how you communicate can help your child grow into a self-aware, solution-oriented thinker.

So next time your child faces a challenge, channel your inner coach and ask instead of tell. Who knows? You might both learn something new.

*Dean Clayden is a UK-educated International Educator and Wellbeing Coach with a Master’s in Psychology with over a decade of coaching experience in Shanghai. Dean combines positive psychology and research-backed methods to help educators and students overcome challenges, build resilience, and thrive. SF*



上海浦东新区民办惠立学校  
Hiba Academy Shanghai  
Wellington College Education

## Hiba Academy Shanghai 上海浦东新区民办惠立学校

"Be You. Be More."



**Date founded**

2018

**Grade level**

Grades 1 to 12

**Curriculum**

In an immersive bilingual environment, Primary and Junior High combine Eastern and Western approaches within the Chinese national curriculum, with pupils beginning IGCSE and transitioning to IBDP in High School.

**Languages taught**

English, Mandarin

**School strengths**

Evidence-based teaching approach blending Eastern and Western excellence; enabling holistic development with 300+ enrichment programs; inspiring pupils through excellent and stable faculty with a 1:1 local to foreign teacher ratio.

**Tuition**

Primary: ¥239,000/year; Junior High: ¥270,000/year; High School: ¥292,000/year

**Description**

Hiba Academy Shanghai is dedicated to connecting the educational excellence of the East and West to create a pupil-centric, bilingual and bicultural learning experience. We aim to inspire our children to be the best version of themselves, to take pride in where they come from and to be the change they wish to see in the world. In addition, we place a greater emphasis on multifaceted abilities, considering both the present and the future, alongside any necessary interim adjustments, to ultimately help pupils realize their own life's significance.



<https://shanghai.hibaacademy.org>



**Telephone:**

+86 (21) 3177 5080



**Email:**

admissions.has@hibaacademy.org



**Address:**

235 Linyao Road, Pudong New Area



**WeChat:**

HibaAcademy\_Shanghai





## The Shanghai Campus of Hongwen School 宏文学校上海校区

"A Sino-Western,  
Human-centric  
Approach to the  
Cultivation of Talents"



<b>Date founded</b>	2018
<b>Grade level</b>	Grade 1 to Grade 12
<b>Curriculum</b>	Chinese National Curriculum, Bilingual Curriculum, IGCSE, A-level, IBDP
<b>Languages taught</b>	English, Mandarin
<b>Tuition</b>	Primary: no more than ¥66,000/semester; Junior Secondary: no more than ¥76,000/semester; High School: ¥10,500/semester; The final approval of the relevant departments shall prevail
<b>Description</b>	The Shanghai Campus of Hongwen School is a private school launched in 2018 that covers 12 years of primary, junior and senior high school. The school is located on No. 318 Chuanda Road, near Shanghai Disney Resort, covering an area of 56,000 square meters, and 42,000 sqm in floor space, with 75% coverage of woody plants. The superbly landscaped campus, surrounded by creeks and dotted here and there with trees, is one of the best in terms of ecology of all schools in Shanghai.



<https://sh-en.hongwenfeh.com/>



**Email:**  
pmadmission@hongwenfeh.com (Primary)  
admissions.shhs@hongwenfeh.com (Middle & High)



**Telephone:**  
189 1784 6368 (Primary)  
180 0171 8391 (Middle & High)



**Address:**  
318 Chuanda Road, Pudong New Area



上海金瑞学校  
JINRUI SCHOOL  
SHANGHAI

"Talk to the World,  
Connect to the Future"



## Jinrui School Shanghai 上海金瑞学校



<b>Date founded</b>	2020
<b>Grade level</b>	Grades 1 to 12
<b>Curriculum</b>	Chinese National Curriculum, Bilingual Curriculum, IGCSE, A-level
<b>Languages taught</b>	English, Mandarin
<b>School Strengths</b>	Visionary Principal, Personalized Learning Environment, Bilingual Education Program, Eco-Friendly Campus, Forward-Thinking Curriculum, Diverse and Experienced Faculty
<b>Tuition</b>	Primary: ¥120,000/year; Junior Secondary: ¥130,000/year; High School: ¥150,000/year
<b>Description</b>	Our school is dedicated to fostering academic excellence and personal growth through a forward-thinking curriculum and small class sizes that ensure individualized attention. Our diverse and experienced faculty brings global perspectives to the classroom, while our dual-language instruction prepares students for a connected world. Set on an eco-friendly campus, we prioritize sustainability and provide a vibrant, nurturing environment. With state-of-the-art facilities and a commitment to innovation, we empower students to become confident, creative, and responsible global citizens. Join us for an inspiring educational journey!



<http://www.jrschool.org.cn>



**Telephone:**  
+86 (21) 6171 9788



**Email:**  
admissions@jrschool.org.cn



**Address:**  
169 Jinchi Road, Baoshan District



**WeChat:**  
jinrui13166130305





美高学校  
LIVING WORD

"Living Word Shanghai cultivates future leaders through our focus on: integrity, good living, and learning habits, and instilling international values."



## Living Word Shanghai 上海美高双语学校



**Date founded**

September 2014

**Grade levels**

Grades 1 to 12

**Curriculum**

Grade 1 to 9: Shanghai National Curriculum integrated with international curriculum; Grade 10-12: American High School Curriculum, AP Courses, A-Level

**Languages taught**

English, Mandarin

**School strengths**

Infusion of multicultural and international elements, six world language programs, 17 AP courses, Cognia accredited

**Tuition**

Primary School: ¥58,000/semester; Secondary School: ¥62,000/semester; High School: ¥89,000/semester

**Description**

Living Word Shanghai offers international quality education in grades 1-12. The school has its own College Application Centre. The aim of the school is to train kids aged 6-18, and to create high-quality bilingual students with an international perspective.



<http://lw-school.org> (Primary School, Middle School)

<http://www.lwshanghai.org> (High School)



**Email:**

[admissions@lwchina.org](mailto:admissions@lwchina.org)



**Telephone:**

+86 (21) 6296 8877

(Primary School, Middle School)

+86 (21) 5237 1000 (High School)



**Address:**

*Primary School, Middle School:* 688 Jiyou Road, Huacao Town, Minhang District

*High School:* 1250 Beisong Road, Minhang District



诺达双语学校上海闵行区  
NACIS SHANGHAI

## NACIS SHANGHAI 上海闵行区诺达双语学校

"Learning at NACIS Shanghai will be a creative, challenging and rewarding experience for your child. They will be inspired to be personally, socially and academically ambitious."



**Date founded**

September 2016

**Grade level**

Grades 1 to 12

**Curriculum**

Grade 1 to 9: Shanghai National Curriculum integrated with international elements  
Grade 10 to 12: International Baccalaureate Diploma Programme, A Level

**Languages taught**

Mandarin, English

**School strengths**

Global Campus - Unique international opportunities, Juilliard-Nord Anglia Performing Arts Programme, The MIT- Nord Anglia STEAM Programme, United Nations UNICEF Student Summit, IMG Academy-Nord Anglia PE Programme.

**Tuition**

Grade 1 to 5: ¥154,000/year; Grade 6 to 9: ¥180,000/year; Grade 10 to 12: ¥240,000/year

**Description**

NACIS SHANGHAI caters to students from age 6 to 18 years and is an authorized IB World School for the International Baccalaureate Diploma Programme. The phase two campus has been officially put into use in September 2020, which can provide advanced educational facilities and diversified teaching environments for 3,770 students. The NACIS curriculum delivers the fundamental learning objectives of the Shanghai National Curriculum integrated with international elements through the medium of Mandarin Chinese and English. Our performing arts programme is developed in collaboration with the Juilliard School and STEAM programme in collaboration with MIT. The school offers the best of Chinese and international learning styles and the experience of leading educators to provide a distinctive global education programme for students.



[www.nacisminhang.cn](http://www.nacisminhang.cn)



**Email:**  
apply@nacis.cn



**Telephone:**  
+86 (21) 2403 8800



**Address:**  
1399 Jinhui Road, Minhang District





## Shanghai Concord Bilingual School Pudong 上海浦东新区民办康德学校

<b>Date founded</b>	September 2023
<b>Grade level</b>	Grades 1 to 12
<b>Curriculum</b>	Integrates the two cultures of China and the UK, aligning the five key stages of education in England with Chinese compulsory education
<b>Languages taught</b>	Mandarin, English
<b>School strengths</b>	Spacious campus and advanced facilities, integration of bilingual and bi-culture, pays attention to students' learning preferences and adopts the mode of small classes.
<b>Tuition</b>	Primary: ¥82,500/Semester; Middle School: ¥95,000/Semester; High School ¥99,000/Semester
<b>Description</b>	SCBS Pudong is a boarding school that offers a comprehensive K-12 programme and aims to develop students into physically and mentally healthy young people, who act with integrity. It encourages students to seek knowledge and truth for the dream of national rejuvenation. It strives to imbue students with a sense of mission and responsibility by absorbing the essence of advanced ideological and cultural thinking.

<https://www.concordschool.com.cn/>



**Email:**  
Enquiriespd@concordschool.com.cn



**Telephone:**  
+86 (21) 6318 6068



**Address:**  
70 Kangheng Road, Pudong New District



**WeChat:**  
SCBS\_Pudong



## Shanghai Concord Bilingual School Puxi 上海康德双语实验学校

<b>Date founded</b>	2017
<b>Grade level</b>	Grades 1 to 12
<b>Curriculum</b>	The courses are divided into the Chinese National Curriculum, the International Curriculum, and Project-Based Learning (PBL).
<b>Languages taught</b>	English, Mandarin
<b>School strengths</b>	Located in the center of Shanghai, SCBS achieves the integration of two languages and two cultures. We pay attention to students' learning preferences and adopt the mode of small classes.
<b>Tuition</b>	Primary: ¥82,000/Semester; Middle: ¥88,000/Semester; High: ¥90,000/Semester
<b>Description</b>	Established in 2017, this is the first bilingual private school in Huangpu District from Grades 1 to 12. The school enjoys the full support of the Party Committee and the Huangpu District Government and adheres to the educational policies stipulated by the Huangpu District Education Bureau. To achieve the high academic standards, we work in cooperation with the UK's premier private school, Concord College. It is a leader in the field of education and was once ranked by the Financial Times as the first of UK's best value boarding schools.

<https://www.concordschool.com.cn/Eindex.htm>



**Email:**  
Enquiries@concordschool.com.cn



**Telephone:**  
+86 (21) 5307 9916; +86 (21) 5240 1091



**Address:**  
Middle School: 53 Runan Road, Huangpu District  
Primary School: 385 South Ruijin Road, Huangpu District



**WeChat:**  
SCBS\_Puxi





## Shanghai Gold Apple School

### 上海市民办金苹果学校

"Respect for differences,  
Construct suitable  
education for students"



<b>Date founded</b>	2000
<b>Grade level</b>	2 years to Grade 12
<b>Curriculum</b>	Chinese Curriculum K12, American Curriculum K12, Cambridge Curriculum K12
<b>Languages taught</b>	English, Spanish, Korean, Mandarin
<b>School strengths</b>	Kindergarten: Bilingual teaching and artistic enlightenment. Primary: Barrier-free spoken English. Learn at least one artistic specialty and achieve supra-national standard in physical fitness. Secondary: Achievement Certificate, Physical Ability Certificate, and Bilingual Speech Certificate. Personalized career planning, university guidance.
<b>Tuition</b>	International Department: Grade 1 to 8: ¥80,000/year, Grade 9 to 12: ¥128,000/year
<b>Description</b>	Shanghai Gold Apple School adheres to the core values of "Responsibility, Generosity, Excellence." With "Respect for differences, build suitable education for students", it aims to be a brand school with "strong personality, excellent features and high degree of internationalization." The school has achieved notable successes, its personalised and featured education has a great influence and popularity in Shanghai and the whole country.



[www.jinpingguo.com.cn](http://www.jinpingguo.com.cn)



**Email:**  
zb@jinpingguo.com



**Telephone:**  
181 1709 7945



**Address:**  
1555, Jufeng Road, Pudong New Area



**WeChat:**  
SGAS-INTERNATIONAL





# Shanghai Liaoyuan Bilingual School (LYBS) 上海市燎原双语学校

"Focusing on Holistic  
Education to Guide  
Lifelong Learning!"



**Date founded**

1992

**Grade level**

Grade 1 to Grade 12

**Curriculum**

Chinese National Curriculum; Ontario Secondary School Diploma (Canada); US High School Certificate; Advanced Placement (AP) options; A-Level Programme

**Languages taught**

Mandarin, English, Japanese, Spanish, French, German

**School strengths**

LYBS is an IB world school (PYP, MYP) offering a dual-track system in a bilingual learning environment supported by a multi-cultural faculty and providing a variety of graduation pathways based on personalized education solutions.

**Tuition**

SY2024-2025: Primary School: Bilingual Classes: ¥7,750/semester, Intergrated: ¥38,250/semester; Middle School: Bilingual Classes: ¥2,750/semester, Intergrated: ¥33,250/semester; International High School: ¥172,000/year, SY2025-2026 fees to be confirmed.

**Description**

LYBS is an IB World School with an uninterrupted history of over 30 years, offering high quality education for students aged 6 to 18. The school's mission is to provide holistic, bilingual education that supports cultural diversity, beliefs and values, and develops the whole child to become a successful global citizen and lifelong learner.



[www.liaoyuanedu.org](http://www.liaoyuanedu.org)



**Email:**

[admissions@liaoyuanedu.org](mailto:admissions@liaoyuanedu.org)



**Telephone:**

+86 (21) 6480 6128 (Elem & MS)

+86 (21) 6480 5828 (Int'l HS)



**Address:**

150 Pingyang Road, Minhang District



"Faith, Hope, Love"



## Shanghai New Epoch Bilingual School 上海新纪元双语学校



<b>Date founded</b>	2015
<b>Grade level</b>	Grades 1 to 12
<b>Curriculum</b>	AP, A-Level, EJU (Exam for Japanese University Admission for International Students)
<b>Languages taught</b>	English, Mandarin
<b>School strengths</b>	NEBS College Prep School engages students in active learning based upon proven and novel modes of instruction that will have graduates fully college ready and prepared to learn at the finest colleges and universities in the world.
<b>Tuition</b>	Primary School: ¥31,000/ semester; Middle School: ¥36,000/ semester; High School: ¥78,000/ semester
<b>Description</b>	Shanghai New Epoch Bilingual School is a private, college-preparatory school located on Chongming Island, Shanghai. The area is known as an international community that produces the top secondary students in China and the world. The Bilingual School is a primary (1) through secondary (12) boarding school that is housed in a world-class ecological island and China's third largest island with brand-new facilities for all aspects of the education of our student body.



<http://www.shnebs.com/>



**Email:**  
2030921832@qq.com



**Telephone:**  
+86 (21) 5943 7525



**Address:**  
1518 Chenxi Village, Chenjia Town, Chongming District



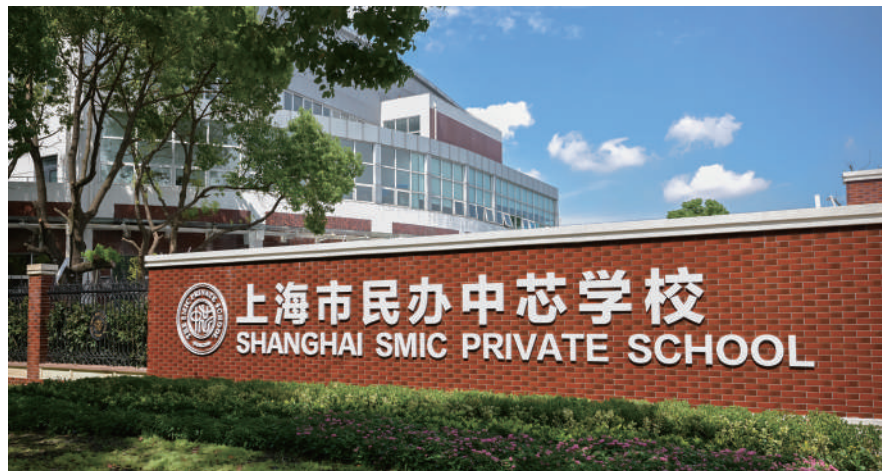
**WeChat:**  
159 0087 8007





## Shanghai SMIC Private School 上海市民办中芯学校

"SMIC's heart and soul is a partnership with families and community to provide positive, student-centered education that balances academic excellence with physical, social, and emotional well-being."



<b>Date founded</b>	2001
<b>Grade level</b>	Kindergarten to Grade 12
<b>Curriculum</b>	American-based curriculum with AP courses for SMIC-I; Chinese curriculum for Chinese track
<b>Languages taught</b>	English, Mandarin, French, Spanish
<b>School strengths</b>	WASC accreditation for SMIC-I, AP courses, bilingual education, athletics, character education
<b>Tuition</b>	<i>SMIC-I</i> : EC: ¥70,000/sem; G1-G5: ¥75,000/sem; G6-G8: ¥80,000/sem; G9-G12: ¥83,000/sem; <i>Chinese track</i> : G1-G5: ¥36,000/sem; G6-G9: ¥40,000/sem; (Gov subsidized: G1-G5: ¥21,750/ sem; G6-G9: ¥20,750/sem); G10-G12: ¥83,000/sem
<b>Description</b>	Founded by SMIC, China's largest semiconductor company, the school has over 3,000 students taught by a faculty of over 300, half of whom are experienced foreign teachers. In addition to the bilingual kindergarten programme, Grades K to 12 students may apply to SMIC-I or the Chinese track upon meeting admissions criteria. The school believes in the holistic development of individuals through curricular and extracurricular activities.



[www.smicschool.com](http://www.smicschool.com)



**Telephone:**  
+86 (21) 2033 2588



**Admissions Contact:**  
admissions@smicschool.com



**Address:**  
*Middle & High School:* 169 Qingtong Road, Pudong New Area  
*Elementary School:* No. 3, Lane 19, Qingtong Road, Pudong New Area



"In Wisdom We Grow,  
In Grace We Flourish"



## Shanghai Songjiang Aiju School 上海松江区爱菊学校



<b>Date founded</b>	2023
<b>Grade level</b>	Grades 1 to 12
<b>Curriculum</b>	Chinese National Curriculum, Bilingual Curriculum
<b>Languages taught</b>	English, Mandarin
<b>School Strengths</b>	Small Class Size, Bilingual Immersion, Holistic Education, Diverse International Exchange Programs, Personalized Education Solutions
<b>Tuition</b>	Primary School: ¥60,000/semester; Middle School: ¥70,000/semester; High School: ¥80,000-100,000/semester
<b>Description</b>	On the basis of the successful experience of running schools in the Xuhui and Qingpu, our group has further expanded its educational territory. In 2019, Aiju Education was introduced by the Education Bureau of Songjiang District and established in the Economic Development Zone of Songjiang District, founding Shanghai Songjiang Aiju School. The school began its operation in 2023, and the new campus is planned to be completed and officially put into use in September 2025. Covering an area of approximately 102 mu with a total investment of over 1 billion yuan, the school is a K12 bilingual school. It aims to provide students with high-quality educational services throughout their educational journey.



**Telephone:**  
+86 (21) 180 1714 7170;  
+86 (21) 153 1750 1861



**Address:**  
Lane 100, East Wen Jun Road, Songjiang District



**WeChat:**  
180 1714 7170





# Shanghai United International School (SUIS Schools) 协和双语学校



**Date founded**

Affiliated to Xiehe Education (Founded in 1993)

**Grade level**

Grades 1 to 12

**Curriculum**

Chinese National Curriculum/IBDP/IGCSE/A-Level/AP/BC

**Languages taught**

Mandarin, English

**Tuition**

Contact campuses for detailed information

**Description**

Xiehe schools (Shanghai United International School, SUIS) is affiliated to Xiehe Education (PreK-12), which was founded in 1993 in Shanghai and bearing "Developing in Harmony, where East Meets West" as its core value. SUIS schools offer diversified curricula for students aged 6 to 18. At the stages of primary and middle school education, a "dual-channel" path is available to families, and this means that students can choose either overseas or domestic channels for their future university applications - SUIS students actually perform quite well in either direction. In the high school stage, SUIS has introduced various mainstream international curricula that are aligned with reputable and renowned organizations and universities around the world, including the International Baccalaureate Diploma Programme (IBDP) from the International Baccalaureate Organization (IBO), Advanced Level (A Level) courses from the UK, Advanced Placement (AP) courses from the US, and British Columbia (BC) courses from Canada. Most of its graduates have entered world-renowned universities.



[www.suis.com.cn](http://www.suis.com.cn)



**Telephone:**

+86 (21) 3431 6025 (HQ)  
+86 (21) 5175 3015 (GB)  
+86 (21) 5417 7228 (SY)  
+86 (21) 6480 7218 ext.836 (JK)  
+86 (21) 6498 1238 (WY)  
+86 (21) 6809 9100 (PD)  
+86 (21) 5580 0228 (PDSL)  
+86 (21) 5978 8662 (QP)  
+86 (21) 156 0177 8798 (PM)  
+86 (510) 8853 7775 (WX)  
+86 (551) 6599 7667 (HF)



**SUIS Schools Address:**

*SUIS Hongqiao:* 999 Hongquan Road, Minhang District, Shanghai  
*SUIS Gubei:* 248 East Hongsong Road, Minhang District, Shanghai  
*SUIS Shangyin:* 310 Luhao Road, Minhang District, Shanghai  
*SUIS Jiaoke:* 55 Wanyuan Road, Minhang District, Shanghai  
*SUIS Wanyuan:* 509 Pingji Road, Minhang District, Shanghai  
*SUIS Pudong:* 468 Kangwu Road, Pudong New Area, Shanghai  
*SUIS Pudong-Sanlin:* 1515 Sanlin Road, Pudong New Area, Shanghai  
*SUIS Qingpu:* 32 Yejin Road, Qingpu District, Shanghai  
*SUIS Peiming:* 1607 Xinzha Road, Jing'an District, Shanghai  
*SUIS Wuxi (WUIS):* 8 Wenjing Road, Business District, Xidong New Town, Jiangsu  
*SUIS Hefei:* 666 Jialingjiang Road, Binhu New District, Hefei, Anhui



## Vanke DTD Primary and Middle Schools 万科德英乐中小学

"Develop Global Vision,  
Inspire Unlimited Potential,  
To Foster Chinese Talents to  
Stand Out in the World."



<b>Date founded</b>	1996
<b>Grade level</b>	Grades 1 to 12
<b>Curriculum</b>	Chinese National Curriculum, Bilingual Curriculum, IGCSE, A-level, IBDP, IBCP, AP
<b>Languages taught</b>	English, Mandarin
<b>Tuition</b>	Primary: ¥70,000 - ¥72,000/semester; Junior Secondary: ¥74,000 - ¥76,000/semester; High School: ¥104,000 - ¥110,000/semester
<b>School strengths</b>	Strong support system, Small class size, Bilingual environment, K-12 Education system, International high school qualifications

### Description



After more than 20 years of development and exploration, Vanke DTD Education has now covered Preschool Education, Compulsory Education, High School Education and Empowering Education, and has participated in teaching management with 10 schools and kindergartens, with a total of more than 5,000 students.



<http://www.dtd-edu.cn>



**Email:**  
adm\_vkbs@dtd-edu.cn (VKBS)  
adm\_vsp@dtd-edu.cn (VSP)  
admission.mhhs@dtd-edu.cn (VKBS High School)



**Telephone:**  
+86 (21) 6459 9759 (VKBS)  
+86 (21) 3463 3623 (VSP)  
+86 150 2119 2850 (VKBS High School)  
+86 181 1719 8864 (VSP High School)



**Address:**  
*Vanke Bilingual School (VKBS):* 3568 Qixin Road, Minhang District  
*Vanke School, Pudong (VSP):* Lane 1700, 2-4 Kangqiao Road, Pudong New Area  
*VKBS High School:* 595 Wubao Road, Minhang District



## Yew Wah International Education School (Lingang Campus)

上海浦东新区民办沪港学校 (耀华临港校区)



<b>Date founded</b>	2015
<b>Grade level</b>	Grade 1 to Grade 12
<b>Curriculum</b>	Primary Programme (Grade 1 to 5): Integrated Curriculum; Lower Secondary Programme (Grade 6 to 9): Integrated Curriculum; Upper Secondary (Grade 9 to 12): IGCSE & A Level. YWIES creates an authentic international atmosphere and learning environment in China's mainland through its comprehensive programme with a team of professional expatriate teachers and advanced education philosophies.
<b>Languages taught</b>	Mandarin, English
<b>School strengths</b>	Holistic education, character education, lifelong learning, all-round English, overseas learning, art and music programme.
<b>Tuition</b>	Primary: ¥158,000/year, Lower Secondary: ¥168,000/year Upper Secondary: ¥255,000/year (IGCSE), ¥265,000/year (A Level)
<b>Description</b>	YWIES focuses on bilingual teaching and has considerable experience in teaching English and Chinese as second languages. The school has a strong team of professional Chinese and expatriate teachers, who work together to implement a new pedagogy that brings international education to the new generation of China. YWIES students can apply for admissions to overseas schools at any level of study through the unique integrated curriculum.

[www.ywies-shpd.com](http://www.ywies-shpd.com)



**Email:**  
enquiry.shpd@ywies.com



**Telephone:**  
400 021 0042  
+86 (21) 6118 0809



**Address:**  
2 Yinlian Road, Nanhui New Town, Pudong New Area

# PARENTS & KIDS

SUBSCRIBE



## Subscribe to HuMaNiuWa

to get the best advice in Shanghai on international education, community events and family health



### • How to subscribe

Scan the QR code on the right side to  
Subscribe ShanghaiFamily, Parents&Kids,  
HuMaNiuWa



SF & PK Subscription



HuMaNiuWa Subscription



# Preschools & Kindergartens

Choose from a variety of early learning programmes for young children





# Battle for Mother Language

**Preserving identity in multilingualism.** *By Leslie Hwang*

**Ten hours of English.**

**Two hours of Chinese.**

**Korean? Just at home—with me and my husband.**

This is what a typical day of language exposure looks like for my sons, who are now 12 and 11. They've been raised in Shanghai since they were in diapers, surrounded by international friends, schools, and multicultural experiences. English dominates their academic life. Chinese fills in through school, friends, and the vibrant city around them. And Korean—our mother tongue—gets whatever slivers of time remain at the dinner table or in quiet family moments.

Aside from attending Korean church on Sundays, their exposure to Korean culture is minimal. Even at home, Korean rarely gets a fair shot. My husband usually unwinds by



watching golf programs—the kind with barely any talking, just the soothing sound of birds chirping in the background.

Sometimes, I catch myself doing the math, calculating how many hours they actually spend with each language. What do those numbers mean for their identity? Can I even call those fleeting moments of Korean conversation “meaningful exposure”? I already know the answer, but the question still lingers, heavy in my heart.

Of course, I’ve tried teaching them Korean before. It began with good intentions and hopeful energy, but quickly spiraled into a cold war at the dinner table. They didn’t understand why learning Korean mattered. Without a sense of purpose, their interest vanished almost overnight.

My husband often says, “They need to know Korean and Korean history to understand who they are.” And I agree with all my heart. But we only get 24 hours in a day. I’m not a tiger mom, and between school, extracurriculars, and everyday life, Korean always seems to slip further down the list.

During the holidays, when they met their grandparents, language became a visible barrier. Korean has a respectful form of speech for elders, and it’s something I don’t want them to ignore. One day, the boys were giggling at the dinner table, chatting in English and Chinese—languages their grandparents couldn’t understand. When I realized what was happening, I quietly pulled them aside. We had a long talk.

They needed to understand that respect, especially within a family, goes beyond words. Yes, they’re young. Yes, they’re sweet and energetic boys. But that moment wasn’t just about language—it was about empathy. I told them that speaking multiple languages isn’t a privilege or an excuse. It’s a responsibility.

Multilingualism can open doors and build bridges. But it should never be used to shut others out—especially not family. Even if they’re not fluent, speaking Korean with grandparents is a small way to honor that connection.

Before we talk about identity, let’s talk about roots. Connection with family is the foundation. And living far from our home country, time with grandparents is precious. I hope they grow to appreciate the warmth and depth of that love—a kind of love that feels different from a parents’, but just as deep.

Now, as summer approaches, I find myself once again at a familiar crossroads: Should my eldest study Korean history or world history this year? I already know the answer in my heart, but I also know how hard it is to turn that answer into action. This quiet tug-of-war has lasted more than a decade—each year pushing the mother tongue just a little further aside.

Life in Shanghai today feels more flexible, especially in international schools. Many of their friends come from families with differ-

ent passports, and I’ve seen how common it is for kids not to speak their parents’ native language fluently. Their introductions often turn into long, winding stories: “I was born in South Korea, but I’ve lived here for years, and then we moved back to...”

But one thing is always clear: these children love every country they’ve called home. For my sons, South Korea still holds a special place in their hearts. It’s where their grandparents welcome them with open arms. It’s where they feel instantly at home. To them, South Korea is paradise: no homework, no classes—just family, shopping, amusement parks, and ski resorts.

And Shanghai? It’s where their childhood lives. It’s the city that gave them friendships, laughter, and countless memories. It may not be their birthplace, but it’s the place where they’ve grown.

So, maybe my expectations need adjusting too. Maybe it’s okay that they can’t write full essays in Korean. Maybe it’s enough—at least for now—that they can tell their grandma how their day went. **SF**





## Fortune Kindergarten

### 海富幼儿园

"Fortune Kindergarten's international education encourages personal, and academic development, nurturing our students into adaptable, moral, thoughtful, and co-operative individuals."



<b>Date founded</b>	1998
<b>Grade level</b>	Baby class to Kindergarten (18 months to 6 years)
<b>Curriculum</b>	School-based international, thematic, English and Mandarin bilingual Early Years Program
<b>Languages taught</b>	English, Mandarin
<b>School strengths</b>	Bilingualism, After-school clubs, Multiculturalism
<b>Tuition</b>	¥9,600 - ¥17,000/month
<b>Description</b>	Fortune Kindergarten is unique, with a proud tradition in early childhood education. Our goal is to accomplish bilingualism through an East-meets-West internationally recognised curriculum. The approach of emphasizing personal and academic student development has been embraced by hundreds of families since the school's founding. The school culture and curriculum stimulates children in all areas of their development, ensuring they enjoy the process of learning while attaining excellent personal values and academic skills.

[www.fkis.com.cn](http://www.fkis.com.cn)



#### Telephone:

+86 (21) 5875 1212 ext. 101, 102 (Main)  
+86 (21) 5458 0508 ext. 8032 (HQ)  
+86 (21) 5070 4300 (JTY)  
+86 (21) 5880 3988 ext. 111 (YH)  
+86 (21) 5417 9425 ext. 606 (ST)  
+86 (21) 3359 2301 (OCT)  
+86 (21) 5875 9020 ext. 106 (TD)  
+86 (21) 6877 2096 ext. 101 (JK)  
+86 (21) 5039 8797 ext. 101 (LY)  
+86 (21) 5608 6609 ext. 101 (Jing'an)  
+86 (21) 5085 5988 ext. 801 (XLC)  
+86 (21) 5978 8650 (Qingpu)  
+86 (0510) 8853 7608 (Wuxi)



#### Address:

*Main Campus:* 55 Lancun Road, Pudong New Area  
*Hongqiao Campus:* 1357 Wuzhong Road, Minhang District  
*Jintaiyang Campus:* No.57, Lane 750, Jinyang Road, Pudong New Area  
*Yaohua Campus:* No.1, Lane 550, Yaohua Road, Pudong New Area  
*Sentosa Campus:* No.450, Lane 2199, Gudai Road, Minhang District.  
*OCT Campus:* 1899 Pushen Road, Minhang District.  
*Tiandi Campus:* No.8, Lane 60, Lancun Road, Pudong New Area  
*Jinkui Campus:* 550 Jinkui Road, Pudong New Area  
*Longyang Campus:* 201 Huanlong Road, Pudong New Area  
*Jing'an Campus:* 1009 Luochuan Middle Road, Jing'an District  
*Xinlicheng Campus:* No.138, Lane 4501, South Yanggao Road, Pudong  
*Qingpu Campus:* 645 Zhiding Road, Qingpu District  
*Wuxi Campus:* 8 Wenjing Road, Xishan District, Wuxi, Jiangsu Province



## Hiba Academy Shanghai

### 上海浦东新区民办惠立幼儿园

"Be You. Be More."



**Date founded**

2016

**Grade level**

Early Years 1 to 4

**Curriculum**

Carefully designed bilingual curriculum combining the English Early Years Foundation Stage and the Chinese Curriculum for children aged three to six, focusing on seven core areas of learning and development.

**Languages taught**

English, Mandarin

**School strengths**

Project-based learning in an immersive bilingual environment; excellent and stable staff with a 1:1 ratio of local to foreign teachers; learning spaces equipped with first-rate teaching facilities.

**Tuition**

¥299,000/year

**Description**

Hiba Academy Shanghai offers a bilingual curriculum that blends the strengths of Western and Eastern education, within a healthy and safe learning environment. Learning is constantly developed through play-based activities. These are centered around a range of projects or themes whereby pupils are invited to share what they already know and, with the help of adults around them, explore the theme in greater depth. This approach aims to stimulate their potential, help them build a stable core, and inspire them to become learners, connectors and changemakers.



<https://shanghai-nursery.hibaacademy.org>



**Email:**

admissions.hasn@hibaacademy.org



**Telephone:**

+86 (21) 3158 0010



**Address:**

215 Tongwan Road, Pudong New Area



**WeChat:**

HibaAcademySHN



"Empowering learners  
with skills for life,  
through dramatically  
different education."



## Julia Gabriel Centre 嘉宝幼儿园、嘉贝托育园



### Date founded

2007 (Shanghai)

### New for 2025

Bilingual Adult-accompanied Programme, Bilingual Speech & Drama Programme, English Enrichment Programme

### Grade level

Adult-accompanied Programme: 6 Months - Entering Nursery  
Bilingual Preschool: 15 Months - 6 Years  
Speech & Drama, English Enrichment Programmes: 2 - 6 Years  
Weekend & Summer Camps: 6 Months - 6 Years

### Curriculum

EduDrama® Approach

### Languages taught

English and Mandarin

### School strengths

Unique EduDrama® methodology, strong immersion bilingual education programmes, nurturing environment to empower children to be expressive, creative, and confident communicators.

### Tuition

Nursery - Kindergarten: ¥200,000 - ¥260,000/year

### Description

A dramatically different learning journey, using Edudrama® as a collaborative process of wonder, curiosity, and self-discovery. Programmes are based on the ideal learning components of a warm, stimulating environment. We are committed to the holistic development of each child as a unique person and empower every learner to succeed in school and in life.



[www.juliagabriel.com.cn](http://www.juliagabriel.com.cn)



#### Email:

Admissions: [enquiries@juliagabriel.com.cn](mailto:enquiries@juliagabriel.com.cn)  
Careers: [hr@juliagabriel.com.cn](mailto:hr@juliagabriel.com.cn)



#### Telephone:

+86 (21) 6418 5600



#### WeChat:

嘉宝嘉贝 JuliaGabriel



#### Address:

*Jiabei Nursery, Qiantan: 1-2F, 195 Dongyu Road*  
*Jiabei Nursery, Xuhui: 460 Yongjia Road*  
*Jiabao Kindergarten, Qiantan: S3, 255 Dongyu Road*  
*Jiabao Kindergarten, Xuhui: 75 Wuxing Road*  
*Joy Explorer Academy: 3-4F, 195 Dongyu Road*



**A DRAMATICALLY  
DIFFERENT  
SCHOOL  
OF THOUGHT**

*Julia Gabriel*  
CENTRE



▶ **Adult-accompanied  
Programme**  
6 Months - Entering Nursery

**Bilingual  
Preschool**  
15 Months - 6 Years

▶ **Speech & Drama,  
English Enrichment  
Programme**  
2 - 6 Years

▶ **Weekend & Summer  
Camps**  
6 Months - 6 Years



**Qiantan • Xuhui**

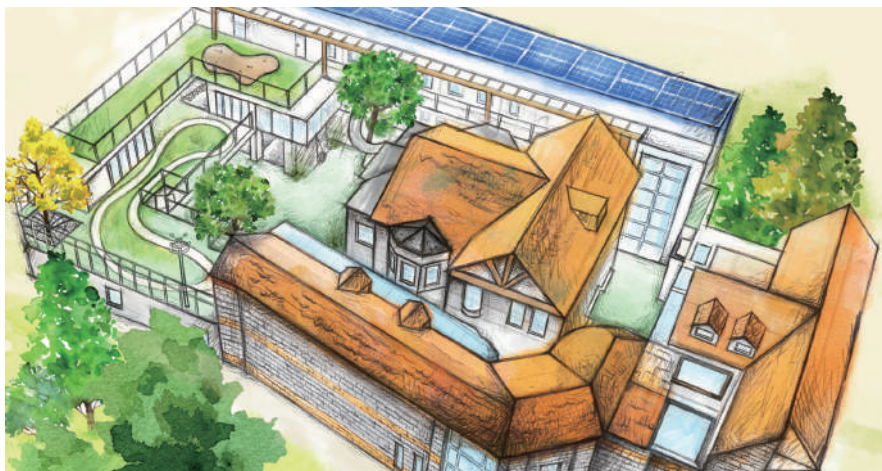
+86 (21) 6418 5600  
**Careers:** [Joinus@juliagabriel.com.cn](mailto:Joinus@juliagabriel.com.cn)  
**Admissions:** [enquiries@juliagabriel.com.cn](mailto:enquiries@juliagabriel.com.cn)



## Magnolia Kindergarten

### 玛诺利娅主题幼儿园

"Magnolia Kindergarten is an official licensed kindergarten located in a 100-year-old manor in People's Square. The certified and experienced team is offering a complete education in a happy, home feeling, and creative environment."



<b>Date founded</b>	2014
<b>Grade level</b>	2 to 6 years, Two's to K levels and TPS to CP levels
<b>Curriculum</b>	Magnolia offers two bilingual sections: English/Mandarin combines British National Curriculum and Chinese Curriculum French/Mandarin Section combines the French National Curriculum and Chinese Curriculum
<b>Languages taught</b>	English, French, Mandarin
<b>School strengths</b>	Creative activities, monthly field trips, no screens, big class sizes in a cosy, family-like environment. English, French, and Mandarin teachers are dedicated full-time to each classroom.
<b>Tuition</b>	¥14,000/month for French/Chinese Section ¥16,500/month for English/Chinese Section
<b>Description</b>	The school's mission is to contribute to the development of internationally-minded, curious and enthusiastic children. Magnolia Kindergarten is a centre for happiness, high quality education, and discovery. The school size is 3,000 sqm. The positive development of children is in the heart of every moment of the day. Facilities include two libraries, one children's kitchen, one art and exhibition studio, one carpentry workshop, one large indoor playground, three outdoor playgrounds, one organic garden, one giant slide, and a tree top canopy play area.

[www.magnolia-kindergarten.com](http://www.magnolia-kindergarten.com)



**Email:**  
admin@magnolia-kindergarten.com



**Telephone:**  
+86 (21) 6314 0012



**Address:**  
57 Jiangyin Road, (close to North Huangpi Road),  
Huangpu District









"Where learning is fun"



## Melodie International Preschool & Kindergarten



<b>Date founded</b>	2005
<b>Grade level</b>	Infant class, Preschool, Kindergarten
<b>Curriculum</b>	British EYFS, Orff Music, Dance, Karate
<b>Languages taught</b>	English, Mandarin
<b>Tuition</b>	¥7,000- ¥8,000/month
<b>Description</b>	Melodie International has two private preschools and one kindergarten. Our mission is "to help children grow happily in a safe, supportive and comfortable learning environment. Here they can develop at their own pace, while having fun and enjoying the magic of their childhood." Our curriculum combines both English and Chinese elements, but both are inspired by STEAM and the British EYFS. We advocate fun-based learning to create an environment where children are confident, sociable, adventurous and build life skills to be ready for their next step in education.



[www.melodypreschool.com](http://www.melodypreschool.com)



**Telephone:**

Yongjia: +86 (21) 6472 0200

Xingguo: +86 (21) 6438 7603

Changning: +86 (21) 6438 7603



**Address:**

Yongjia Campus: No. 31, Lane 356, Yongjia Road, Xuhui District

Xingguo Campus: 91A Xingguo Road, Xuhui District

Changning Campus: 307 Changning Branch Road, Changning District





## Tiny Tots International Pre-School and Kindergarten

### 上海泰宁外籍人员子女幼儿园

"Where successful  
learning begins."



**Date founded**

1997

**Grade level**

18 months to 6 years old

**Curriculum**

The Tiny Tots curriculum is an American based researched program named World of Wonders/Wonders. It provides supports and structure for literacy while building knowledge across all subject areas. It is developmentally age appropriate and correlates with the Early Learning Framework in many countries. We pull from best practices and have created a well-balanced, engaging, challenging but fun schedule for each level that has been incredibly successful and well-received for decades.

**Languages taught**

English

**School strengths**

Class size: 12-15. Teacher/student ratio: 1:4.

**Tuition**

Full-day: ¥183,200; Half-day: ¥151,200

**Description**

With three decades as the only English-licensed stand-alone kindergarten in Shanghai, Tiny Tots International Preschool & Kindergarten values the development of each student as an individual, in a holistic learning environment where they are encouraged to think like global citizens and act like future leaders. Our focus continues to be on nurturing areas of whole-child development, social-emotional milestones and academic success at each specific age level of our early childhood education program based on best practices for international schools.



[www.tinytots.com.cn](http://www.tinytots.com.cn)



**Email:**

[info@tinytots.com.cn](mailto:info@tinytots.com.cn)



**Telephone:**

+86 (21) 6431 3788/ 173 163 79 155



**Address:**

No.24, Lane 280 Wukang Road, Xuhui District



**WeChat:**

*TinyTotsShanghai*



## The Little Urban Center (LUC)

### LUC儿童中心

"Global Views,  
Global Minds"



<b>Date founded</b>	2012
<b>Grade level</b>	Pre-Nursery to Year 1
<b>Curriculum</b>	Innovative inquiry-based curriculum with EYFS framework
<b>Languages taught</b>	English, Mandarin
<b>School strengths</b>	Comprehensive diversified co-curriculum programme (PE, vocal, dance, music, art and STEM); Holistic childhood development; Integrated early education; Project-based learning
<b>Tuition</b>	¥170,000/year
<b>Description</b>	LUC thrives to provide all of our learners with quality learning experiences. We firmly believe that every learner at LUC is unique, is constantly learning and can be resilient, capable, confident and self-assured. We built our school on the premise that children learn and develop well in enabling environments, in which their experiences respond to their individual needs and we continually work for a strong partnership between our school and a child's family.



[www.luc-china.com](http://www.luc-china.com)



**Email:**

LUC: admission@luc-china.com  
LUC Puxi: LUCpuxi\_admission@luc-china.com



**Telephone:**

LUC: 177 0215 8659  
LUC Puxi: 187 2136 0833



**Address:**

*Junior Campus:* 230-231 Regency Palace, 779 Fangdian Road, Pudong New Area  
*Senior Campus:* Bldg 10, 1000 Lingshan Road, Pudong New Area  
*LUC Nature Kindergarten (LUC Puxi):* Block 1, No.88 Fuquan North Road, Changning District



**WeChat:**

*WeChat:* LUC儿童中心  
*小红书:* LUC麓贤





## Vanke DTD Kindergarten 万科德英乐幼儿园

"Enlighten the Mind,  
Inspire the Potential,  
Embrace the Future,  
to Foster Chinese  
Talents to Stand Out  
in the World."



**Date founded**  
**Grade level**  
**Curriculum**  
**Languages taught**  
**Tuition**  
**Description**

2017  
Nursery Class, Preschool, Pre-Kindergarten, Kindergarten  
GLLASS Curriculum System: Game, Life Skills, Learning, Art, Science, Sports  
English, Mandarin  
¥14,000 - ¥14,800/month  
DTD Education has five private kindergartens and two nurseries. Their mission is to "Inspire the potential, enlighten the mind, embrace the future, and foster them to be: Chinese talents that stand out in the world." DTD Early Childhood Education has developed the "GLLASS" (Games, Life Skills, Learning, Art, Science, Sports) system to be the core of our learning activities. We advocate student-centred learning to create an environment in which learning naturally occurs. By immersing our students in project-based learning they are able to spark their interest in learning and develop their core abilities.



<http://kt.dtd-edu.cn>



**Telephone:**  
177 4086 1864 (Minhang)  
+86 (21) 5844 8060 (Pudong)  
+86 (21) 5811 1759 (Zhoupu)  
+86 (21) 6605 0651 (Jing'an)



**Address:**  
*Vanke Kindergarten, Minhang: 356 Xingzhan Road, Minhang*  
*Vanke Kindergarten Pudong: 700 Kangqiao Road, Pudong*  
*DTD Kindergarten, Zhoupu: 408 Zhoukang Road, Pudong*  
*DTD Kindergarten, Jing'an: 2310 Changzhong Road, Jing'an*



"Cultivating Young  
Global Citizens With  
a Chinese Heart"



## X.L.X Kindergarten 上海学乐星幼儿园



### Date founded

Xiaomiao, 2005; Pudong, 2018; Minhang, 2021

### Grade level

2 - 6 years

### Curriculum

X.L.X-S.I.N.A.: Shanghai Curriculum; IB PYP (IB Primary Years Programme); Nature Aesthetic Education; and ASS (Arts, Science and Sports) form the X.L.X curriculum

### Languages taught

English, Chinese, Bilingual Immersion. X.L.X helps children connect with a globalized future through bilingual immersion, while developing cross-cultural understanding. X.L.X creates an immersive environment with both Chinese and foreign teachers in the classroom. Professional teachers help children express themselves in Chinese and English throughout the day.

### Tuition

Please inquire at the kindergarten

### Description

X.L.X Kindergarten, with three campuses in Shanghai, is a part of Yushen Education, whose schools are all accredited by the International Baccalaureate Organization (IB). Xue Le Xing's philosophy is to integrate Shanghai's local kindergarten curriculum with the IB PYP, following the philosophy of local curriculum, which focuses on holistic, sustainable development of students, and the IB which cultivates students into global citizens with a Chinese heart.



<http://www.ys-edu.com.cn/>



### Email:

marketing@ys-edu.com.cn



### Telephone:

X.L.X Minhang: +86 (21) 180 0171 5571

X.L.X Pudong: +86 (21) 131 2789 5783

X.L.X Xiaomiao: +86 (21) 187 0191 7684



### Address:

X.L.X Minhang: 515 Huguang Road, Minhang

X.L.X Pudong: 58 Hongya Road, Pudong

X.L.X Xiaomiao: 1977 Luoxiu Road, Minhang



### WeChat:

XLX-Kindergarten



# Enrichment

Explore specialized  
and supplemental  
education





## ELG Early Intervention Kindergarten 学建早期干预幼儿园

"Early Childhood Intervention is founded on the belief that addressing developmental challenges early in a child's life can lead to more positive outcomes in the long term."



**Date founded**

2024

**Grade level**

Ages 3-6

**Curriculum**

At ELG's Early Intervention Kindergarten (EIK), each child's learning journey is guided by an Individualized Development Plan (IDP) focused on pre-academics, cognitive development, communication, motor skills, social-emotional growth, self-help, and sensory development. Learning is engaging and effective, combining classroom instruction, small group and one-on-one activities, and play-based approaches. We use research-based, strengths-focused, and neurodiversity-affirming practices to support early childhood development.

**Languages taught**

Bilingual program in English and Chinese

**Tuition**

2025-26 School Year: Full-day ¥400,000

**Description**

Partnered with Tiny Tots Kindergarten, EIK offers a nurturing, individualized program for preschool-aged children who benefit from additional support, including those with autism, learning differences, and developmental challenges. With a 1:3 educator-to-child ratio, our multidisciplinary team—including special educators, speech-language pathologists, occupational therapists, counselors, art and music therapists, and physical educators—works collaboratively to support a child's growth. Each child has an IDP with tailored goals. We provide daily communication, family workshops, and support groups so caregivers feel informed, empowered, and never alone on this journey. Our goal is to help children thrive—socially, emotionally, physically, and academically—so they can confidently step forward, whether at ELG or transitioning to a mainstream school with the skills they need to succeed.



[www.chinaelg.cn](http://www.chinaelg.cn)



**Email:**  
services@chinaelg.com



**Telephone:**  
400 612 9423



**Address:**  
50 Gumei Road, Minhang District



**WeChat:**  
chinaelg





## ELG Young Learners & Pre-Vocational Program 学建 (普陀校区)

"Empowering All Learners:  
Building #ELGCommunity  
Where You Belong"



**Date founded**

2006

**Grade level**

Young Learners (ages 7-14) and Pre-Vocational program (above age 14)

**Curriculum**

Our curriculum is guided by an Individualized Development Plan, specific goals tailored to each student's unique needs and strengths. These goals span academics, cognitive development, speech-language communication, gross and fine motor skills, emotional and social growth, self-help skills, and sensory development. Engaged learning takes place through classroom activities, small group and one-on-one sessions, community exploration, vocational experiences, and theme-based projects. Each program incorporates research-based best practices and follows strengths-based, neurodiversity-affirming approaches to create a supportive and empowering environment. Extra-curricular services, including horse-back riding and mixed martial arts, are offered by external community partners.

**Languages taught**

Bilingual program in English and Chinese

**Tuition**

2025-26 School Year: Full-day ¥400,000

**Description**

We provide personalized, full-day programs for neurodivergent learners with autism, ADHD, developmental delays, sensory processing differences, etc. With a 1:3 educator-to-child ratio, our team—including special educators, speech-language pathologists, occupational therapists, counselors, art and music therapists, and physical educators—designs learning experiences for each student's strengths, interests, and communication style. Together with parents, we develop an IDP tailored to each child's goals. Parents receive daily updates and are invited to join regular training sessions, social events, and support groups. In our community, every child—and every family—is seen, supported, and empowered to grow.



[www.chinaelg.cn](http://www.chinaelg.cn)



**Email:**  
services@chinaelg.com



**Telephone:**  
400 612 9423



**Address:**  
No. 19-20, Lane 209, Zhennan Road, Putuo District



**WeChat:**  
chinaelg

## MEDICAL SERVICES

### Health Clinics & Services

#### AM-SINO HEALTHCARE

Founded in 2003, Am-Sino Healthcare is a leading private healthcare provider in Shanghai, committed to delivering high-quality, professional, and patient-centered care. The group's network comprises a hospital, three comprehensive outpatient centers, a maternity and infant post-partum care center, and a pediatric rehabilitation clinic, strategically located across key districts of Shanghai. 24-Hour: 155 Songyuan Rd, Xuhui District; Outpatient: 399 Nanquan North Rd, Pudong New Area; 800 Huashan Rd, Changning District; 321 Weihai Rd, Jing'an District; 99 Danba Rd, Putuo District; 1868 Pudong Avenue, Pudong New Area; Appointments: 400 163 4482; <https://www.am-sino.com/>

#### BODY & SOUL MEDICAL CLINICS

Combining the best of East and West, Body & Soul brings together the natural healing techniques of TCM with Western diagnostic and treatment science, in a comfortable multilingual, multidisciplinary environment, with experts from all over the world in holistic disciplines. Services include: TCM and internal medicine, acupuncture, herbal medicine, gynecology and fertility treatment, kid's health, cupping, tuina massage, dermatology, functional medicine, chiropractic, osteopathy, physiotherapy and rehabilitation, psychology & family therapy, orthotics, alternative healing, medical imaging, laboratory services, Western and Chinese pharmacies. 14F, 760 South Xizang Road, Tel: 6345 5101; 211 Chengjiaqiao Road, Tel: 6461 6550, [www.tcm-shanghai.com](http://www.tcm-shanghai.com), call individual clinics for opening hours

#### DeltaHealth HOSPITAL SHANGHAI AND DeltaHealth CLINIC HONGQIAO

DeltaHealth is a foreign-funded healthcare provider based in Shanghai. Operating in Qingpu and Changning, DeltaHealth provides a range of comprehensive healthcare services including 24/7 ER services, preventive health, general practice, internal medicine, gynecology, pediatrics, dermatology, combined TCM and western medicine, cardiology, ENT, rehabilitation, psychology, nutrition, medical imaging cardiology, cardiac surgery, surgery, thoracic surgery, digestive medicine, endocrinology, orthopedics, VIP Vaccination and more, to people living in East China and beyond. DeltaHealth hospital has also maintained a strategic collaboration with Columbia Heart Source, with a focus on cardiovascular care. Hospital: Xule Road, Xujing Town, Qingpu District, Open 24/7; Hongqiao Clinic: 5F, Bldg B, 2558 West Yan'an Road (Next to Grand Millennium Shanghai Hongqiao, in Shanghai Workers' Sanatorium), Open Mon-Sat, 8.30 a.m. - 6 p.m., Tel: 400 821 0277, [www.deltahealth.com.cn](http://www.deltahealth.com.cn)

#### ESSENCE EYECARE CLINIC

Essence Eyecare Clinic is an eye clinic brand owned by listed company Lepu Medical. It has a top tier medical service team and medical expert team, which can provide services that prioritize the needs of customers. The three to one distinguished service includes optical service, diopter correction, eye disease treatment, etc. The mission of the clinic is to protect the vision

health of children and adolescents. Shanghai Clinic: Rm 1001-1006, 10F, Zi'an Bldg, 315 Yuyuan Road, Jing'an District, Tel: 021-5292 1853/ 189 3989 6079; Hangzhou Clinic: Rm 401, 4F, 501 City Plaza of Hangzhou, 9 Jingtian Road, Shangcheng District, Tel: 0571-2833 8080/ 130 6779 7679; Wuxi Clinic: 82 Zone 4 of Vanke City Garden, Wanshun Road, Binhu District, Tel: 0510-8331 8897/ 177 5149 8285

#### GLOBAL HEALTHCARE (GHC)

GHC is one of the earliest joint-venture and managed healthcare companies to set foot in China. Established in Shanghai since 2005, GHC is a premier one stop medical center offering a range of comprehensive medical services including General Practice/Family Medicine, 18 Specialty Services, Dental Services, Vaccination Services as well as in-house Radiology and Laboratory services. GHC has a highly-experienced international multilingual medical team. GHC, in partnership with over 50 insurance companies, offers patients a direct billing service. GHC has two medical centers conveniently located in Jing'an & Pudong and opens every day of the year. Jing'an Center: Suite 303, 1788 Nanjing West Road; Pudong Center: Shanghai World Financial Center, Shop 212, 100 Century Avenue. 24H Hotline: 400 690 8866; Mon-Fri 9am-19pm, Sat-Sun 9am-17pm; [www.ghcchina.com](http://www.ghcchina.com)

#### LIH OLIVIA'S PLACE

LIH Olivia's Place Shanghai has served thousands of children and their families since 2010. We provide one-stop, international standardised high-quality developmental and behavioral services for children from birth to age 18. Our highly skilled team of international and Chinese clinicians work with families through evidence-based practice to support children's physical development, well-being, independence, family life, learning, emotion and social interactions to fulfill their potential. Services Include: Developmental Behavior Pediatrics, Speech therapy, Occupational therapy, Physical therapy, Psychology support (including assessment and consultation), Learning and Behavior support, ABA, Social Skill Groups, Parents Education, Professional Education for teachers, doctors, therapists and other related professionals. 3F, 1868 Pudong Avenue, Oriental City Tower, Pudong New Area; 35 Yongjia Road, 19F (near Maoming Road), Huangpu District, Tel: 6075 3100, 5404 0058/59, [sh.changhedayun.com](http://sh.changhedayun.com)

#### JIAHUI HEALTH

Jiahui Family Medicine is accredited by the World Organization of Family Doctors (WONCA), an international certification for high standard healthcare in general practice and family medicine. We will accompany you and your family on your health journey, from disease prevention to health management. With the help of community clinics and specialists, we are prepared to oversee the diagnosis and treatment of common diseases, as well as provide long-term chronic disease management for patients. This includes coordinating various specialist referrals, international referrals, and tracking rehabilitation follow-up after patients have been discharged. Jiahui International Hospital: 689 Guiping Road (near Qinjiang Road), Mon-Sun, 24h; Jiahui Health (Jing'an): 88 Changshu Road, Jing'an District, Mon-Sat, 8am - 8pm, Sun 8a.m. - 6p.m.; Jiahui Health (Yangpu): 1F/2F, Suite 3, 99; Jiangwancheng Road,

Yangpu District, Mon-Fri 8:00-20:00, Sat-Sun 8:00-18:00; Tel: 400 868 3000, [www.jiahui.com/en](http://www.jiahui.com/en)

#### MINDFRONT SHANGHAI CLINIC

Mindfront Shanghai Clinic specializes in urban mental disorders or mental health issues, providing multidimensional professional help in various disorders/issues such as sleep disorders, anxiety and depression, obsessive-compulsive disorders, ADHD in children and adolescents, women's mental health, addictive behaviors, parent-child/family relationships, social relationships, etc. Our professional team consists of psychiatrists with extensive clinical experience and overseas-trained counselors/therapists. Professional services are delivered through a multidisciplinary teamwork model. Also, case manager is assigned to provide support throughout the course of treatment and ensure timely responses to client needs. 18F, Crystal Tower, 68 Yuyuan Road (near Jiaozhou Road), Jing'an District, Mon-Sun, 10a.m.-6p.m., Tel: 6718 8883, [www.mindfront.com/en/home](http://www.mindfront.com/en/home)

#### PARKWAY



With more international doctors and a wider range of services than any other healthcare provider in Shanghai, Parkway provides premium medical and dental services for the whole family. Each clinic offers laboratory, radiology, and imaging services, with an onsite pharmacy. Services Include: Adult & family medicine, acupuncture, allergy, cardiology, chiropractic, dentistry & orthodontics, dermatology, ENT, hand & plastic surgery, gastroenterology, general surgery, nutrition, gynecology, ophthalmology, orthopedics & sports medicine, pediatrics, physical therapy, osteopathy, mental health & counseling services, speech therapy, TCM, urology. Suite 203-204, West Plaza, Shanghai Centre, 1376 West Nanjing Road, Jing'an District; 4F, Tomorrow Square, 389 West Nanjing Road, Huangpu District; 997 Biyun Road, Pudong New Area; 505 Gubei Road, Changning District; No.1172 Jile Road, Minhang District, Shanghai; Appointments: 400 819 6622; [www.parkwaychina.com](http://www.parkwaychina.com)

#### RAFFLES HOSPITAL SHANGHAI

Raffles Hospital Shanghai is an international tertiary acute general hospital owned by Raffles Medical Group from Singapore. The hospital adopts a hospital-hotel management style and provides premium treatment, nursing, health management and wellness services to residents, expatriates and patients at the prestigious



Qiantan area of Shanghai and the surroundings. With a gross floor area of 70,000 square metres, we are equipped with high-quality facilities, environment, and provide personalised medical solutions. Our group is also on the medical panel of many established insurance companies and provides direct billing service. 200 Yuanzhao Road, Pudong New District; 24/7; Tel: 6129 3000

### SHANGHAI EAST INTERNATIONAL MEDICAL CENTRE

SEIMC is a joint venture general hospital in Shanghai. Since 2004, they have been providing quality 24-hour care to families from all over the world. Their international team of medical professionals provide a wide range of services that make them the healthcare provider of choice for expatriate and local communities. Services Include: 24-hour emergency, Anesthesiology, ENT, general practice, gynecology, inpatient facilities, internal medicine, medical imaging, medical laboratory, obstetrics, pediatrics, preventive medicine, rehabilitation, surgery, TCM, vaccinations, BLS, CPR and first aid courses in English and Chinese. 23-24F, Bldg B, 551 South Pudong Road, Pudong New Area, Tel: (24-hour service) 5879 9999 or 150 0019 0899; Outpatient services Mon-Fri 9 a.m.- 5 p.m. and Sat-Sun 9 a.m.- 5 p.m.; Medical and emergency services available 24 hours/7 days; www.seimc.com.cn

### SHANGHAI KAIYI CLINIC

Shanghai Kaiyi Clinic is a privately-held Shanghai-based healthcare company under the Columbia China umbrella which is founded by Columbia Pacific Management from the USA and Sheares Healthcare Management from Singapore. To meet the growing needs for international standard medical services, our team of multilingual doctors, rehab team and staff from China, USA, and Japan assure you of quality medical care that is safe, reliable and hassle-free. The right treatment for the right patient every time. Puxi Bainuo Clinic: 25F United Plaza, 1468 West Nanjing Road, Mon-Sun 8 a.m.-7 p.m., Tel: 400 663 7707\*1, 021 6327 5599; Pudong Yihui Clinic: Rm. 511-513, 5F, Building B, LCM, 2389 Zhangyang Road, Tel: 400 663 7707\*2, 021 6882 1212, Mon-Sat 9 a.m.-6 p.m.; columbia-clinic.com

### SHANGHAI RENAI HOSPITAL

Renai is the first private hospital in Shanghai. It has over 20 clinical departments with outpatient and inpatient services. It is influential throughout the East China region and enjoys a high reputation. It is located in the city centre with very convenient transportation. Free parking is available within the hospital compound. Services Include: Cardiology, family medicine, internal medicine, general surgery, gynecology, dental, dermatology, ENT, TCM, urology, pediatrics, orthopedics, ophthalmology, urology, cosmetic dermatology, plastic surgery, vaccination and immunization. 127 Caoxi Road, Xuhui District, Tel: 5489 3781, www.renaihospital.com, Mon-Sun 9 a.m.-5 p.m.

### SHANGHAI YOSEMITE CLINIC

Yosemite Clinic is a full-service clinic providing convenient walk-in medical services in Central Pudong. Our team of experienced physicians and nurses are dedicated to practicing according to strict patient safety standards and evidence based medicine. Services Include: Family Medicine,

Internal Medicine, General Surgery, Orthopedics (Sports Medicine), Dermatology & Medical Cosmetology, Dentistry, Gynecology, Ophthalmology, Pediatrics, ENT, Vaccination Service, Anesthesiology, Rehabilitation Medicine, Medical Imaging, Pharmacy, Laboratory, Psychiatry. B1-1F, 1398 Fangdian Road, Pudong New Area; Open Mon-Sat: 9 a.m.- 9 p.m., Sun: 9 a.m.- 5 p.m. Tel: 400 850 0911; www.yosemiteclinic.com

### UNITED FAMILY HEALTHCARE (UFH)

United Family Healthcare (UFH) is an experienced, comprehensive, patient-centred caregiver that has been providing personalised, international-level healthcare in China since 1997. Supporting local and expat individuals and families in Shanghai since 2004 with a wide range of advanced medical services, United Family now has 2 full-service hospitals and 3 neighborhood clinics, conveniently located in both Puxi and Pudong. Our Shanghai medical facilities are operated by over 200 highly-experienced full-time doctors from over 25 different countries and regions, supported by more than 300 nurses. Visit our website (<http://shanghai.ufh.com.cn>) and scan the QR code to make appointments right on your WeChat through our new Patient Portal, or simply call our Shanghai-wide Appointment Centre at 400 639 3900 to experience Shanghai's foremost medical care. 699 Pingtang Road (near Kele Road), Open 24/7; 1598 New Jinqiao Road, (near Donglu Road), Pudong New Area, open 24/7; 8 Quankou Road (near Linquan Road); 689 Yunle Road (near Jinfeng Road); Suite 402, 85 Taoyuan Road Silver Court Building). Tel: 400 639 3900; shanghai.ufh.com.cn

## Dental Clinics

### ACE DENTAL

Ace Dental in Hongqiao is your go-to place for all your family's dental needs under one roof. We make dental care accessible and efficient for every family member, catering to children, adults and seniors alike. With over 20 years of clinical practice, our team prioritize personalized care, prevention, conservative treatments and clear communication with our clients prior to their treatments. We provide: Children & Adult Orthodontics, Early Orthodontic Treatment, Implant Dentistry, Oral Surgery and General Dentistry for the family. Unit 101 Level 2 MERC (Beside Hongqiao Central Garden estate), 2079 Hami Road (junction of Ping Xi Road), Tel: 6237 3872, open daily 10 a.m.-7 p.m. except public holidays, [acedental@163.com](mailto:acedental@163.com)

### ALPHA DENTAL

Alpha Dental is a Singaporean-managed private practice located in Changning since 2004. Our team believes in three key values: prevention comes first, adopting a conservative approach, and ensuring clear communication of treatment plans to our clients. We specialize in orthodontics for both children and adults, dental implants, oral surgery, children dentistry, and cosmetic dental procedures. Plus, we make paying easy by offering direct billing with most local and international insurance companies. Unit 206, Tower 1, SOHO Tianshan Plaza, 1737 Tianshan Road; Tel: 6270 2875 (24hr emergency hotline 139 1811 1319); open daily 10 a.m.-7 p.m. except public holidays, [www.alphadental.cn](http://www.alphadental.cn)

### JIAHUI DENTAL

The experienced dentists at Jiahui Health provide dental health services for adults and children, including dental check-ups, fillings, tooth decay prevention, painless dental pulp treatment, and treatment and protection against periodontal diseases, orthodontic treatments, teeth whitening, dental implants and wisdom teeth extraction. The Dentistry Department also carries out multi-disciplinary collaborations with other departments within the hospital, such as working with dermatologists to offer Invisalign orthodontics; working with E.N.T. specialists to help adolescents with problems bad breath, adenoidal hypertrophy and allergic rhinitis; working with Orthopedics to provide sports lovers a comprehensive range of preventive strategies for sports injuries, etc. Jiahui International Hospital: 689 Guiping Road (near Qianjiang Road), Mon - Sun, 24h; Jiahui Health(Jing'an): 88 Changshu Road, Jing'an District, Mon - Sat, 8am - 8pm, Sun 8am-6pm; Jiahui Health (Yangpu): 1F/2F, Suite 3, 99; Jiangwan Cheng Road, Yangpu District, Mon-Fri 8:00-20:00, Sat-Sun 8:00-18:00; Tel: 400 868 3000; [www.jiahui.com/en](http://www.jiahui.com/en)

### PURESMILE ORTHODONTICS & DENTISTRY

PureSmile provides exemplary dental care and treatment in a comfortable, friendly environment. Combining the highest level of clinical training with the most advanced dental and orthodontic technology, they are committed to distinctive dentistry for you and your family, with most of their doctors trained in North America and Europe. Services Include: General dentistry, pediatric dentistry, restorative dentistry, cosmetic dentistry, orthodontics. No. 1-4, 650 Biyun Road, Jinqiao, Pudong New Area, Tel: 6105 9400; Unit 2P, 2F, 2268 Hongqiao Road, Changning District, Tel: 6237 6969; Shop 111, 569 Yunle Road, Huacao Town, Minhang District, Tel: 3490 9068; Room 1201, 818 West Nanjing Road, Jing'an District, Tel: 6363 6388; Daily 10 a.m.- 6 p.m.; [www.puresmile.com](http://www.puresmile.com)

### PARKWAY HEALTH DENTAL CENTRES

With a comprehensive range of dental services provided by internationally qualified dentists, ParkwayHealth Dental Centres ensure you receive the very best level of dental care possible. Services Include: General Dentistry, Cosmetic Dentistry, Orthodontics, Pediatric Dentistry, Preventative Dentistry, Periodontics, Dental implants. team of highly-qualified dentists offering a comprehensive range of Orthodontics and Dental Services. Suite 203-204, West Plaza, Shanghai Centre, 1376 West Nanjing Road, Jing'an District; Jinqiao Medical and Dental Centre 997 Biyun Road, Pudong New Area; Tel: (24-hour appointment) 400 819 6622; [www.parkwaypanal.cn](http://www.parkwaypanal.cn)

### NEW YORK DENTAL CLINIC

New York Dental Clinic provides personalised dental services from their American dentists and orthodontists and other dental specialists with professionalism, reliability, and comfort. New York Dental Clinic offers direct billing to major insurance companies. Services include: family dentistry, pediatric dentistry, dental implants, esthetic dentistry, oral surgery, orthodontics, periodontics, and endodontics 29 East Fugui Road, Changning District; 28 Hongfeng Road, Pudong New Area, Tel: 6278 1181; Mon-Sat 10 a.m.- 7 p.m., closed on Sundays; [www.newyorkdentalchina.com](http://www.newyorkdentalchina.com), WeChat: NYDC-Shanghai

# Glossary

**A-Level:** A curriculum occupying the last two years before university in the British schooling system. Students specialize in subjects for exams.

**ACT:** A standardised test for high school achievement used in the United States assessing student learning in English, Mathematics, Reading, Science, and Writing. An alternative to the SAT for college applications.

**Advanced Placement (AP):** These are exams for students run by a US-based College Board. AP aims to emulate first year college courses, enabling high school students to earn college credit.

**American Curriculum:** A US curriculum based on Common Core State Standards for the core subjects English Language Arts, Math, History and Geography, and Sciences. Follows Kindergarten to Grade 12 (K-12) numbering.

**AP Capstone:** AP diploma programme built on the AP Seminar and AP Research, designed to complement in-depth, discipline specific study provided through the AP courses.

**British Columbia (BC) Curriculum:** Follows the official government curriculum and education standards of British Columbia, Canada.

**British Curriculum:** Follows the National Curriculum of England where learning materials are produced in the UK. It culminates with IGCSE and A-Level certification. Follows Year 1 to Year 13 numbering.

**Chinese National Curriculum:** Follows the official Chinese government curriculum requirements for Chinese nationals of mandatory school age up to grade 9.

**EAL/EFL/ESL:** These programmes offer assistance for students learning English as a second language, with half or full-day programmes and individual tutoring during non-school hours.

**Early Years Foundation Stage (EYFS):** The British government's set of standards for learning and development of children under age 5.

**French Baccalauréat:** Also known as Le Bac, it is the secondary school national curriculum in France.

**German DIA:** The Deutsches Internationales Abitur (DIA) is the German international high school diploma.



**HKDSE:** Hong Kong Diploma of Secondary Education is a standardized examination for senior secondary school students. It serves as a qualification for university admissions.

**IB (PYP) (MYP) (DP) (CP):** The International Baccalaureate Programme includes Primary Years, Middle Years, and Diploma Programmes, which can be followed by the Career-related Programme. The DP requires six courses, Theory of Knowledge (philosophy), and a 4,000-word extended essay. The IBDP is accepted in college applications worldwide.

**IGCSE:** The International General Certificate of Secondary Education is taken between the ages of 14 and 16. Students are required to study core topics along with a select number of over 70 optional topics. Students move on to study AP, IB, A-Levels.

**IPC:** The International Primary Curriculum instills in children a desire to learn by focusing on three aspects of subject matter: knowledge, skill, and understanding.

**Japanese EJU:** The Examination for Japanese University Admission for International Students is a standardized test used to assess the academic abilities and Japanese language proficiency of international students applying to Japanese universities.

**Montessori:** Theory of education characterised by freedom within limits, thus facilitating the development of the child's independence. Methods focus on the child's natural learning process, honed by independently working with materials rather than direct instruction.

**SAT:** A test used in the US for college applications. The test comprises three parts: Evidence-based Reading, Writing and Language, Maths, and an optional Essay

**STEM:** Science, Technology, Engineering, and Mathematics. The suite of subjects relating to these fields of study. Sometimes written with Arts included as STEAM.

**TOEFL:** Test of English as a Foreign Language assesses English proficiency. International students applying to English speaking universities are required to take the TOEFL exam.

# Schools Index

## International Schools

Concordia International School Shanghai	34
Deutsche Schule Shanghai	35
Dulwich College Shanghai Pudong	36
Dulwich College Shanghai Puxi	37
Harrow International School Shanghai	38
Lycée Français de Shanghai (Shanghai French School)	39
Shanghai American School (SAS)	40
Shanghai Community International School	42
Shanghai Hong Qiao International School (HQIS)	41
Shanghai Livingston American School	44
The British International School Shanghai (BISS) Puxi	45
Wellington College International Shanghai	46
Yew Chung International School of Shanghai (YCIS)	47

## Bilingual & Local Schools (International Divisions)

Hiba Academy Shanghai	52
Hongwen School	53
Jinrui School Shanghai	54
Living Word Shanghai	55
Nord Anglia Chinese International School Shanghai	56
Shanghai Concord Bilingual School Pudong	57
Shanghai Concord Bilingual School Puxi	57
Shanghai Gold Apple School	58
Shanghai Liaoyuan Bilingual School (LYBS)	59
Shanghai New Epoch Bilingual School	60
Shanghai SMIC Private School	61
Shanghai Songjiang Aiju School	62
Shanghai United International School (SUIS Schools)	63
Vanke DTD Primary & Middle Schools	64
Yew Wah International Education School (Lingang Campus)	65



## Preschools & Kindergartens

Fortune Kindergarten	70
Hiba Academy Shanghai	71
Julia Gabriel Centre	72
Magnolia Kindergarten	74
Melodie International Preschool & Kindergarten	76
The Little Urban Center (LUC)	77
Tiny Tots International Pre-School & Kindergarten	78
Vanke DTD Kindergarten	79
X.L.X Kindergarten	80

## Enrichment

ELG Early Intervention Center	87
ELG Young Learners & Pre-Vocational Program	88



# School Visit Checklist

Cut out and make several copies to bring along to each school.

School name: \_\_\_\_\_

Address: \_\_\_\_\_

Phone: \_\_\_\_\_

School size: \_\_\_\_\_ Student nationalities: \_\_\_\_\_

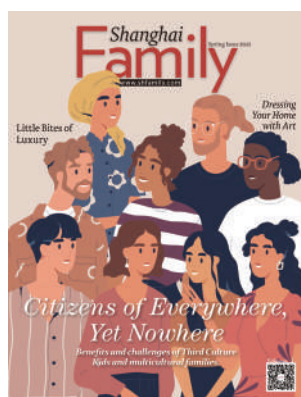
## The school offers:

- |  |   |   |
|--|---|---|
| <input type="checkbox"/> Air purification system           | <input type="checkbox"/> Competitive sports   | <input type="checkbox"/> Library              |
| <input type="checkbox"/> AP courses                        | <input type="checkbox"/> Computer lab         | <input type="checkbox"/> PTA/PTO              |
| <input type="checkbox"/> Band/music classes                | <input type="checkbox"/> Counselling services | <input type="checkbox"/> Safe & secure campus |
| <input type="checkbox"/> Boarding                          | <input type="checkbox"/> ESL/ESOL/EAL         | <input type="checkbox"/> Sports fields/courts |
| <input type="checkbox"/> Buses for after-school activities | <input type="checkbox"/> Gymnasium            | <input type="checkbox"/> Swimming pool        |
| <input type="checkbox"/> Clean facilities                  | <input type="checkbox"/> IB Programme         | <input type="checkbox"/> Theatre/auditorium   |

Your observations:	Notes:
1. Are students engaged, attentive, and happy?	
2. Do students treat others with respect?	
3. Do students seem prepared for class?	
4. Describe the overall "look & feel" of the school.	
5. How does your child feel about the school?	

Questions to ask administrators:	Notes:
1. What sets your school apart from the others?	
2. What are your academic and behavioural expectations for students?	
3. Do you have resources for students with learning disabilities?	
4. What is your teacher-to-student ratio?	
5. How do you hire teachers?	
6. How do you assess teacher performance?	
7. In what ways are parents involved at school?	





For the latest info on family life, education, health and wellness, food, travel, lifestyle and much more!

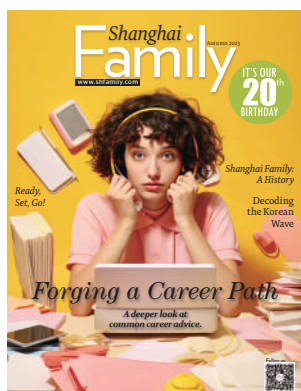
[www.shfamily.com](http://www.shfamily.com)



Shanghai  
Family

Parents & Kids

虎媽牛娃  
HUMANITWA







**Concordia**  
INTERNATIONAL SCHOOL SHANGHAI  
上海协和国际外籍人员子女学校



# Life success starts with Concordia.

Concordia fosters a love for learning from the very start. Here, young minds are encouraged to explore, create, and express themselves, laying a strong foundation for future academic success.

Visit us



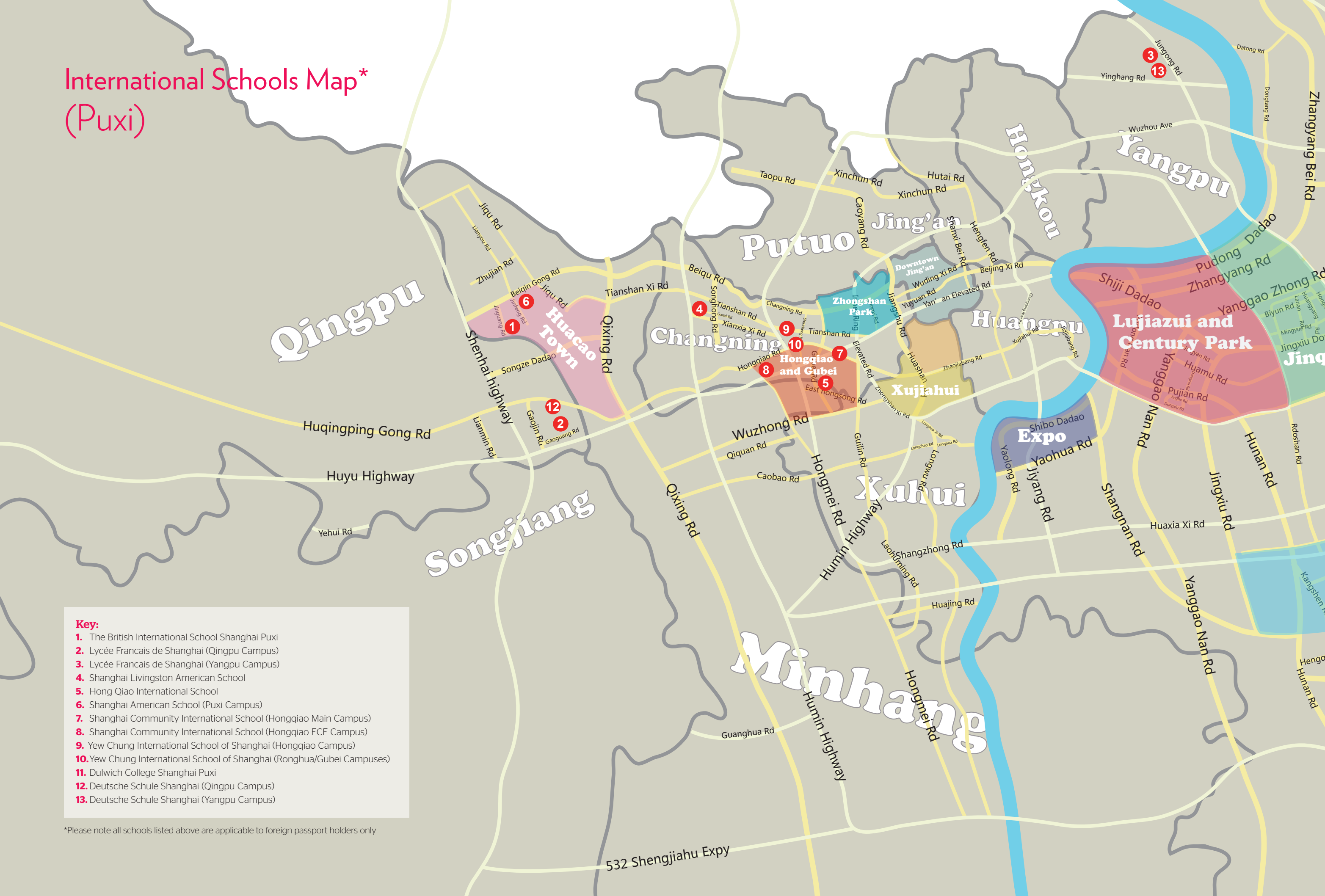


# International Schools Map\* (Puxi)

**Key:**

- 1. The British International School Shanghai Puxi
- 2. Lycée Francais de Shanghai (Qingpu Campus)
- 3. Lycée Francais de Shanghai (Yangpu Campus)
- 4. Shanghai Livingston American School
- 5. Hong Qiao International School
- 6. Shanghai American School (Puxi Campus)
- 7. Shanghai Community International School (Hongqiao Main Campus)
- 8. Shanghai Community International School (Hongqiao ECE Campus)
- 9. Yew Chung International School of Shanghai (Hongqiao Campus)
- 10. Yew Chung International School of Shanghai (Ronghua/Gubei Campuses)
- 11. Dulwich College Shanghai Puxi
- 12. Deutsche Schule Shanghai (Qingpu Campus)
- 13. Deutsche Schule Shanghai (Yangpu Campus)

\*Please note all schools listed above are applicable to foreign passport holders only



International Schools Map\*  
(Pudong)



- Key:**
- 1. Concordia International School Shanghai
  - 2. Dulwich College Shanghai Pudong
  - 3. Shanghai American School (Pudong Campus)
  - 4. Shanghai Community International School (Pudong Campus)
  - 5. Wellington College International Shanghai
  - 6. Yew Chung International School of Shanghai (Regency Park Campus)
  - 7. Yew Chung International School of Shanghai (Century Park Campus)
  - 8. Harrow International School Shanghai

\*Please note all schools listed above are applicable to foreign passport holders only